

FLUSH MOUNTS 2400-3CCT



WARNING

WARNING — THE INSTALLATION MUST BE CARRIED OUT BY A QUALIFIED ELECTRICIAN.

- LED Flush mounts are suitable for using in damp locations
- Please keep the LED Flush mounts away from any corrosive substance, and please use dry cloth when you clean it
- Before installation or maintenance, please disconnect the power to prevent electric shock

CAUTION

PLEASE READ INSTRUCTION BEFORE COMMENCING INSTALLATION AND RETAIN FOR FUTURE REFERENCES.

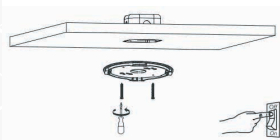
- Electrical products can cause death or injury, or damage to property.
- If in any doubt about the installation or use of this product, consult a competent electrician.

APPLICATION NOTICE

1. Turn **OFF** the power supply at the fuse or circuit breaker box before you install the fixture.
2. Ground the fixture to avoid potential electric shocks and to ensure reliable starting.
3. Double-check all connections to be sure they are tight and correct.
4. Wear rubber soled shoes and work on a sturdy wooden ladder.
5. This fixture is designed for use in a circuit protected by a fuse or circuit breaker. The fixture is also designed to be installed in accordance with local electrical codes. If you are unsure about your wiring, consult a qualified electrician or local electrical inspector, and check your local electrical code.
6. **WARNING — RISK OF CUTS:** Some metal parts in the fixture may have sharp edges. To prevent cuts and scrapes, wear gloves when handling the parts.
7. **WARNING — RISK OF FIRE:** Use 120V AC 50/60Hz circuits.
8. **DO NOT** change the LED light source or driver inside under any circumstance.
9. **DO NOT** cover the fixture with any heat insulated materials.

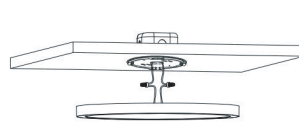
INSTALLATION GUIDE

SURFACE MOUNT



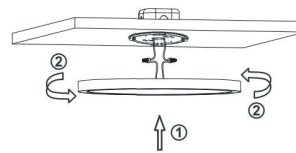
STEP 1

1. Turn off the switch. Screw the bracket to the junction box and ceiling



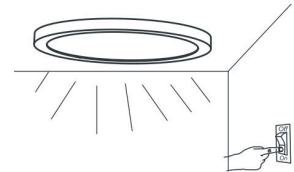
STEP 2

2. Connect the lamp body wires with power cord



STEP 3

3. Push the lamp towards the ceiling and rotate the lamp to make the mounting plate and the lamp body fixed tightly

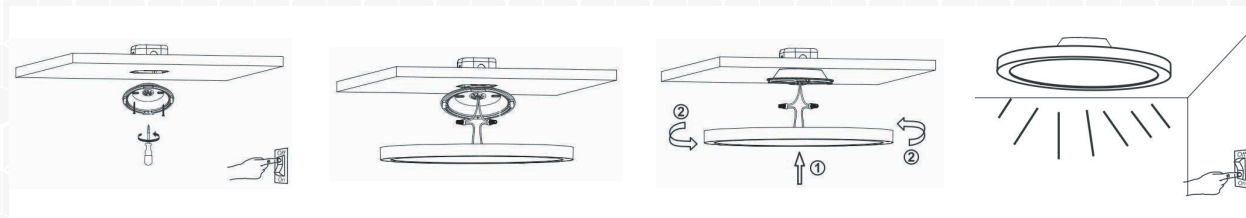


STEP 4

4. Turn on the switch to check if the lamp works normally

INSTALLATION GUIDE

SEMI-FLUSH MOUNT



STEP 1

1. Turn off the switch. Screw the semi-flush mounted bracket to the junction box and ceiling

STEP 2

2. Connect the lamp body wires with power cord

STEP 3

3. Push the lamp towards the ceiling and rotate the lamp to make the mounting plate and the lamp body fixed tightly

STEP 4

4. Turn on the switch to check if the lamp works normally

HIGH EFFICIENCY | UNIFORM LIGHTING
NO GLARE OR DARK SPOTS | INSTANT-ON



ORTECH reserves the right to modify at any time, without notice, any or all of our product's features, designs, components and specifications to meet market changes.

