

MOTION SENSOR FLUSH MOUNTS

FM1-MS5-5CCT | FM1-MS7-5CCT | FM1-MS9-5CCT

Recommended to install MAX 2.4m above detection area



Air Tight



Indoor Use



Intertek



DIMMABLE



ENERGY STAR

WARNING

WARNING — THE INSTALLATION MUST BE CARRIED OUT BY A QUALIFIED ELECTRICIAN.

- LED Closet lights are suitable for using in damp locations
- Please keep the LED Closet lights away from any corrosive substance, and please use dry cloth when you clean it
- Before installation or maintenance, please disconnect the power to prevent electric shock

CAUTION

PLEASE READ INSTRUCTION BEFORE COMMENCING INSTALLATION AND RETAIN FOR FUTURE REFERENCES.

- Electrical products can cause death or injury, or damage to property.
- If in any doubt about the installation or use of this product, consult a competent electrician.

APPLICATION NOTICE

1. RISK OF SHOCK — House electric current can cause painful shock or serious injury unless handled properly.

For your safety, always remember to:

A) Turn OFF the power supply at the fuse or circuit breaker box before you install the fixture

B) Double-check all connections to be sure that they are tight and correct

2. This fixture is designed for use in a circuit protected by a fuse or circuit breaker. It is also designed to be installed in accordance with local electrical

codes. If you are unsure about your wiring, consult a qualified electrician or local electrical inspector, and check your local electrical code

3. RISK OF CUTS — some metal parts in the fixture may have sharp edges. To prevent cuts and scrapes, wear gloves when handling the parts

4. Account for small parts and destroy packing material, as these may be hazardous to children

5. The light source contained in this luminaire shall only be replaced by the manufacturer or his service agent or a similar qualified person

6. Terminal block and the suspending accessories are not included. Installation must be performed by a qualified person

TOOLS REQUIRED



Phillips
Screwdriver



Wire
Cutters



Pliers



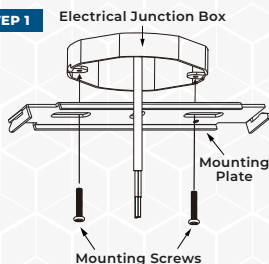
Wrench

INSTALLATION GUIDE

RECOMMENDED TO INSTALL MAX 2.4M ABOVE DETECTION AREA

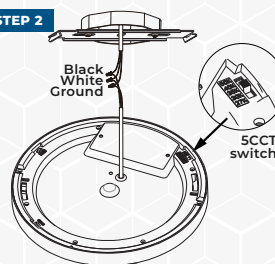
OPTION 1: FLUSH MOUNT

STEP 1



1. Pull the supply wires and house ground wire from the Outlet Box. Position the mounting plate over the Junction Box. Mark the location of the two holes located on the Mounting Plate. Be sure to mark only the narrow parts of the hole. Removing Plate from the ceiling. Drill the two holes using the appropriate type and size drill bit. Insert anchors into the holes. (See Step 1)

STEP 2



2. Wire Connections : Connect the house ground wire to the fixture ground wire; connect the white supply wire to the white fixture wire; connect the black supply wire to the black fixture wire by using the wire connectors. Carefully tuck all wires back into the Junction Box. Adjust the 5CCT switch. (See Step 2)

ORTECH reserves the right to modify at any time, without notice, any or all of our product's features, designs, components and specifications to meet market changes.



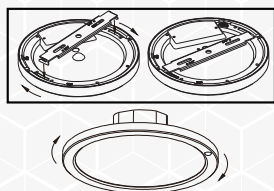
MOTION SENSOR FLUSH MOUNTS

FM1-MS5-5CCT | FM1-MS7-5CCT | FM1-MS9-5CCT

INSTALLATION GUIDE

OPTION 1: FLUSH MOUNT

STEP 3



3. Snap and fix the clip in the bracket.
(See Step 3)

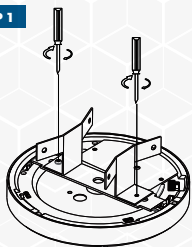
STEP 4



4. Turn on the power and Light up the lamp.

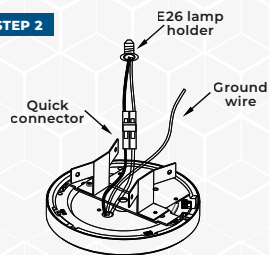
OPTION 2: RETROFIT A RECESSED CAN

STEP 1



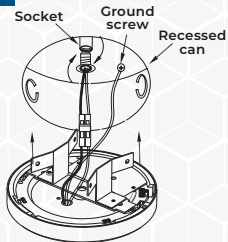
1. Choose a 4-inch housing (for FM1-MS5-5CCT) and 5-inch or 6-inch housing (for FM1-MS7-5CCT & FM1-MS9-5CCT) and secure it with screws at the corresponding holes on the bracket.

STEP 2



2. Insert wires into Quick connector. Black to black and white to white. Attach ground Wire to ground screw in recessed can.

STEP 3



3. Turn E26 lamp holder into socket base. Connect Quick Connectors Tuck all wires into recessed can. Squeeze springs and push up into recessed can.

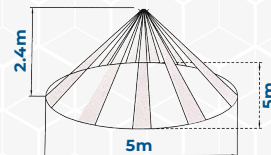
STEP 4



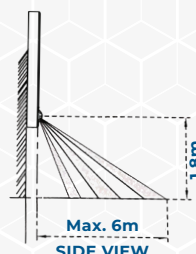
4. Turn on the power and Light up the lamp.



SENSOR DETECTION RANGE



Ceiling Mount Sensor Detection Range



Wall Mount Sensor Detection Range

ORTECH reserves the right to modify at any time, without notice, any or all of our product's features, designs, components and specifications to meet market changes.

