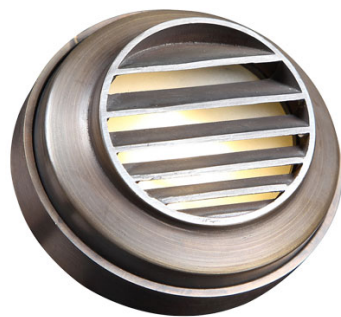


## MODEL OD-DKB202



### WARNING

#### **WARNING — THE INSTALLATION MUST BE CARRIED OUT BY A QUALIFIED ELECTRICIAN.**

1. LED Deck Lights are for outdoor use only with low voltage landscape power units that do not exceed 25 amps, 15V maximum
2. Luminaires **MUST** be installed in accordance with the National Electrical Code (NEC), Canadian Electrical Code (CEC) and local codes. Failure to do so will void the warranty and may result in serious injury and/or damage to the luminaire
3. G4 Bin-pin or Halogen lamps

#### **Application Notice**

TO REDUCE THE RISK OF FIRE, ELECTRIC SHOCK, OR INJURY TO PERSONS, READ THE INSTRUCTIONS BELOW:

1. Keep away from combustibles. Turn OFF / unplug to change lamp. DO NOT touch the lamp and replace after servicing
2. When using multiple luminaires, load is not to exceed the total watts of transformer rating
3. DO NOT operate the LED Deck Light fitted with a missing or damaged shield  
(Exception — Reference to a shield is able to be replaced with equivalent wording)
4. Install all luminaires 10 feet (3.05m) or more from a pool, spa, or fountain
5. DO NOT touch the lamp directly at any time. Use a soft cloth. Oil from skin may damage the lamp
6. ALWAYS use UL, cUL, and CSA recognized wire connectors for connections
7. DO NOT use extension cords on power units
8. DO NOT touch hot lens, guard, or enclosure

### CAUTION

**PLEASE READ INSTRUCTION BEFORE COMMENCING INSTALLATION AND RETAIN FOR FUTURE REFERENCES.**

**Electrical products can cause death or injury, or damage to property.**

**If in any doubt about the installation or use of this product, consult a competent electrician.**

## INSTALLATION GUIDE

### Luminaire Mounting

1. To prevent electric shock, disconnect transformer from electrical supply before installation or service
2. Drill hole through post or flat mounting surface to feed lead wire through
3. Position fixture against mounting surface and mark surface through both screw slots
4. While luminaire is positioned in place, install mounting screws through the luminaire screw slots, securing luminaire to the post / flat mounting surface
5. Strip the (2) leads from the luminaire pigtail wire.  
Using the two (2) silicone filled safety connectors (by others), connect the leads from the luminaire to the main supply cable leads

**\*\* Luminaires are supplied with 36" of 18-2 cable pigtail for secure connection to the main supply cable. The fixture supply cable is to be protected by routing in close proximity to the luminaire. The fixture supply should be buried to a maximum depth of 6 inches (15.2 cm) in order to connect to the main secondary supply cable. To purchase additional lengths of main low voltage cable for the connection of the equipment, please contact your local electrical supply distribution company.**

6. Replace luminaire cover and twist to secure in place

