

MODEL ODB4-100



WARNING

WARNING — THE INSTALLATION MUST BE CARRIED OUT BY A QUALIFIED ELECTRICIAN.

1. These Dryer Boxes are suitable for indoor use only
2. Please keep the Dryer Boxes away from any corrosive substance, and please use dry cloth when you clean it
3. Dryer Boxes can only be installed by a qualified electrician
4. Before installation or maintenance, please read through this instruction manual
5. Be careful of the Dryer Boxes' sharp edges

CAUTION

PLEASE READ INSTRUCTION BEFORE COMMENCING INSTALLATION AND RETAIN FOR FUTURE REFERENCES.

Electrical products can cause death or injury, or damage to property.

If in any doubt about the installation or use of this product, consult a competent electrician.

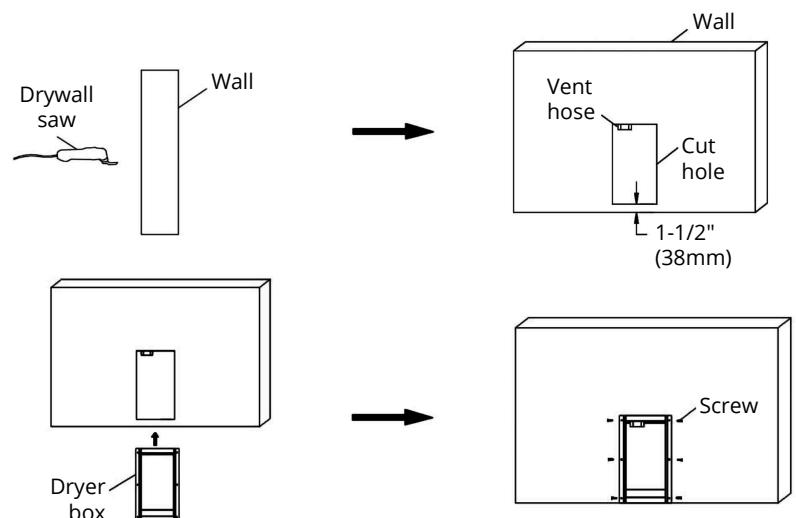
INSTALLATION GUIDE

Pre-installation

1. Unplug the dryer
2. Shut off the gas
3. Disconnect the vent hose from the dryer

Dryer Box Installation

1. Confirming that installation is possible, mark the position of the pipe/hose, cut a hole not less than 18-3/8" x 9-7/8" x 3-15/16", which should be 1-1/2" away from the ground
2. Position the upper end of the Dryer Box into the opening in the wall and align the pipe through the opening in the top port
3. Once the pipe is through the top port, continue to push the dryer box from the bottom to be flushed to the drywall
4. Use a drywall screw or self-tapping screw to secure the dryer box



ORTECH reserves the right to modify at any time, without notice, any or all of our product's features, designs, components and specifications to meet market changes.