

### MODEL OE-316



### WARNING

#### WARNING — THE INSTALLATION MUST BE CARRIED OUT BY A QUALIFIED ELECTRICIAN.

1. LED Exit Signs are for INDOOR USE ONLY
2. Please keep the LED Exit Signs away from any corrosive substance, and please use dry cloth when you clean it
3. LED Exit Signs can only be installed by a qualified electrician
4. Before installation or maintenance, please disconnect the power to prevent electric shock

#### Application Notice

1. All electrical connections MUST be in accordance with local codes, ordinances and the National Electric Code
2. Equipment should be mounted in locations and at heights where it will not be subjected to tampering by unauthorized personnel
3. The use of accessory equipment is not recommended by the manufacturer. DO NOT use the LED Exit Sign other than intended use
4. DO NOT mount in hazardous locations or near gas or electric heaters. DO NOT let power cords touch hot surfaces
5. Disconnect power at fuse or circuit breaker before installing or servicing
6. Allow battery to charge for 24 hours before first use



### CAUTION

**PLEASE READ INSTRUCTION BEFORE COMMENCING INSTALLATION AND RETAIN FOR FUTURE REFERENCES.**

**Electrical products can cause death or injury, or damage to property.**

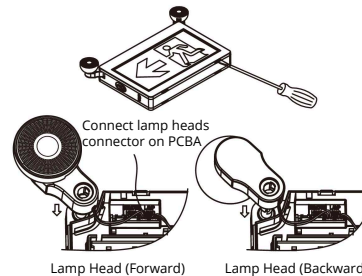
**If in any doubt about the installation or use of this product, consult a competent electrician.**

### INSTALLATION GUIDE

#### Mounting Instruction

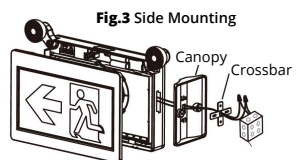
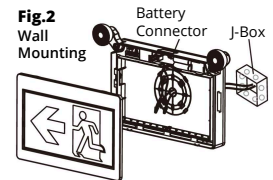
THE FIXTURE IS SUITABLE FOR WALL, SIDE AND CEILING MOUNTING

1. Open front cover and assemble 2pc lamp heads on the frame
2. Knockout appropriate mount screw hole and cable hole, mount back plate on the wall after feeding building AC Supply Cable into back plate (see Fig.1)
3. For ceiling and side mounting purpose, remove the mounting hole cover on the top or side of unit, assemble the canopy (see Fig.3, Fig.5, and Fig.4)
4. Attach crossbar to junction box, set the longer blade of crossbar touching the J-Box
5. Route the proper wires through mounting hole out of housing
6. Make electrical connections inside the J-Box using the wiring diagram (see Fig.7)
7. Push excess wire into J-Box, use screws to tighten canopy to crossbar so canopy is securely fastened and tight against the wall
8. Attach battery connector to PC Board, restore front cover on unit, adjust position of lamp heads as needed
9. If pictogram direction assembled is not suitable, change pictogram direction or replace pictogram and then insert into diffuser (see Fig.6)



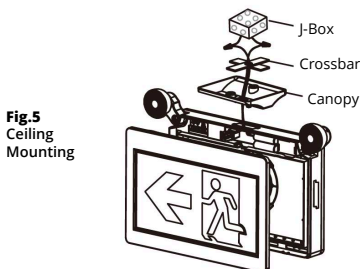
**Fig.1 Assembly Lamp Heads**

1. Open front cover by flat screwdriver
2. Insert the lamp heads at the corners of the main frame. Select direction of lamp head before inserting
3. Connect male connector on lamp head to female connector on PCBA

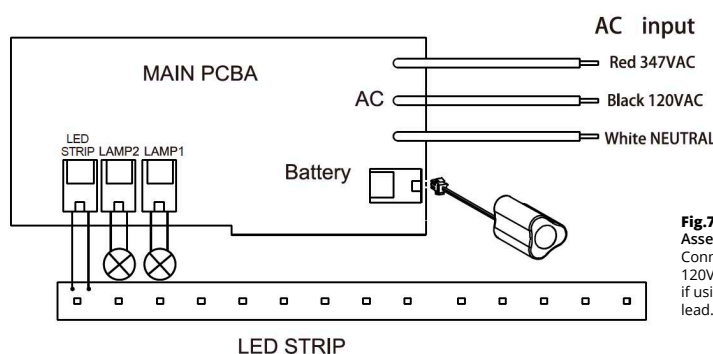
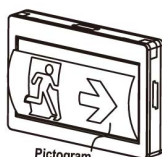


**Fig.4 Canopy Assembly**

Insert canopy into housing at 20° and twist. Quick snap is now firmly locked. CAUTION — Trying to remove canopy locked in place may cause damage.



**Fig.6 Change direction of pictogram**



**Fig.7 Wiring Diagram Assembly Lamp Heads — AC WIRING**  
Connect the WHITE wire to NEUTRAL. If using 120V, connect the BLACK wire to the hot lead. If using 347V, connect the RED wire to the hot lead. Cap unused lead.

ORTECH reserves the right to modify at any time, without notice, any or all of our product's features, designs, components and specifications to meet market changes.