

## MODEL OL-2HS



### WARNING

#### **WARNING — THE INSTALLATION MUST BE CARRIED OUT BY A QUALIFIED ELECTRICIAN.**

1. LED Security Lights are suitable for using in dry and damp locations
2. Please keep the LED Security Lights away from any corrosive substance, and please use dry cloth when you clean it
3. LED Security Lights can only be installed by a qualified electrician
4. Before installation or maintenance, please disconnect the power to prevent electric shock

#### **Application Notice**

1. To reduce the risk of death, personal injury or property damage from fire, electric shock, falling parts, cuts / abrasions and other hazards, please read all warnings and instructions included with and on this product prior to installation
2. For commercial installation, service and maintenance of this product should be performed by a qualified, licensed electrician
3. For residential installation, if you are unsure about the installation or maintenance of this product, consult a qualified licensed electrician
4. DO NOT mount the unit against flammable surfaces
5. It is recommended that this security light is mounted at least 6' 6" off the ground
6. The security light MUST be powered directly to a switched circuit
7. The security light should NOT be used in areas with limited ventilation or high ambient temperatures
8. The security light CANNOT be used with a dimmer switch, motion or occupancy sensor or other electronic switching device
9. This product is intended to be connected to a properly installed and grounded UL listed junction box

#### **WARNING — RISK OF ELECTRICAL SHOCK**

- Turn OFF electrical power at fuse or circuit breaker box before wiring product to the power supply
- Verify if the supply voltage is correct before installing (110V-240V)
- Make all electrical and grounded connections in accordance with the National Electric Code and any applicable local code requirements
- All wiring connections should be capped with UL listed wire connectors

#### **WARNING — RISK OF PRODUCT DAMAGE**

- NEVER connect fixture with power ON
- DO NOT mount or support product in a manner that can cut the outer jacket or damage the wire insulation
- Avoid covering LED products with insulation, foam or other materials that will prevent convection or conduction cooling
- NEVER connect an LED product directly to dimmer packs, occupancy sensors, timing devices, or other related control devices, unless individual product specifications deem otherwise
- LED products are Polarity Sensitive. Ensure proper polarity before installation
- Electrostatic Discharge (ESD), can cause damage to LED products. Wear personal grounding equipment during installation and service of the product
- DO NOT touch the individual electronic components, as it may cause ESD (Electronic Discharge). ESD will shorten lamp lifetime or alter performance

#### **WARNING — RISK OF INJURY**

- Wear gloves and safety glasses at ALL TIMES when removing fixture from carton, installing or servicing the product
- Avoid direct eye exposure to the light source while it is ON. LED lights are extremely bright, under no circumstances should you stare directly into an LED light, as it may cause irreparable damage to the eyes
- Please dispose of packaging materials and account for all small parts as these can be hazardous to small children

#### **WARNING — RISK OF BURN**

- Allow fixture to cool completely before handling. DO NOT touch enclosure of light source
- DO NOT exceed maximum wattage marked on the label
- Keep combustible and other materials that can burn away from the light, lamp / lens

### CAUTION

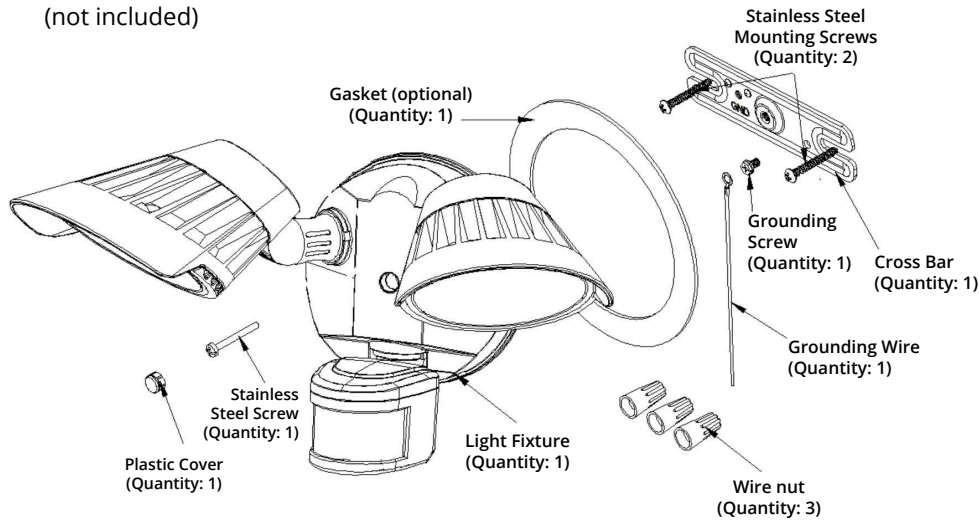
**PLEASE READ INSTRUCTION BEFORE COMMENCING INSTALLATION AND RETAIN FOR FUTURE REFERENCES.**

**Electrical products can cause death or injury, or damage to property.**

**If in any doubt about the installation or use of this product, consult a competent electrician.**

### INSTALLATION GUIDE

\*\* Silicon Sealant recommended  
(not included)



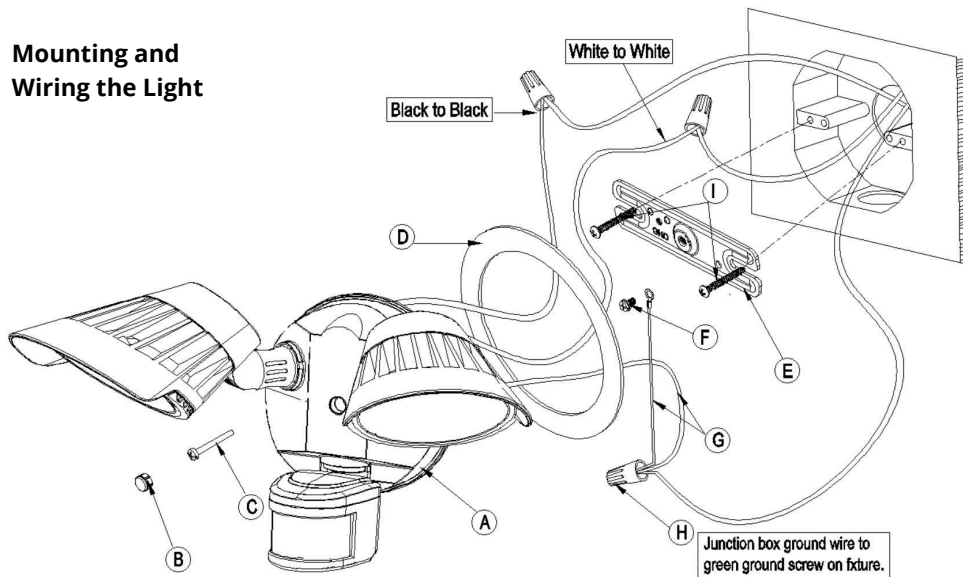
#### Tool Required for Installation

- Phillips screw driver and level

**DO NOT MOUNT ON THE GROUND.**  
Recommended installatio height is  
6-1/2 ft to 10 ft.

1. Turn OFF power to the circuit breaker box. DO NOT rely on only the switch power being turned OFF
2. Install the cross bar (E) to the junction box and secure with the (2) mounting screws (I). If installing to a wall or building, pre-drill holes and use appropriate plugs / anchors. Then, install the cross bar to the surface using the (2) mounting screws (I)
3. On the cross bar, locate GND, attach the GROUND wire (G) with the grounding screw (F) to the cross bar
4. Use a wire nut (H) to connect the grounding wire (G) to the house ground wire (typically copper). For proper connection, place wire nut over wires and twist clockwise until tight
5. Connect supply wires with wire nuts (H) as shown in the figure on the bottom left. BLACK supply wire connects to BLACK power supply wire (Live). WHITE product wire connects to WHITE supply wire (Neutral)
6. You may use the optional gasket (D) at this time round
7. Install the light fixture (A) to the cross bar (E). Use silicone sealant (not included) around the perimeter of the light to seal for moisture
8. Screw in the stainless steel screw (C) to hold fixture in place. Insert plastic screw cover (B) into screw hole
9. Turn ON your electricity after the installation has been completed
10. Turn ON power switch (if power switch is not on, the light will NOT cycle ON or OFF)

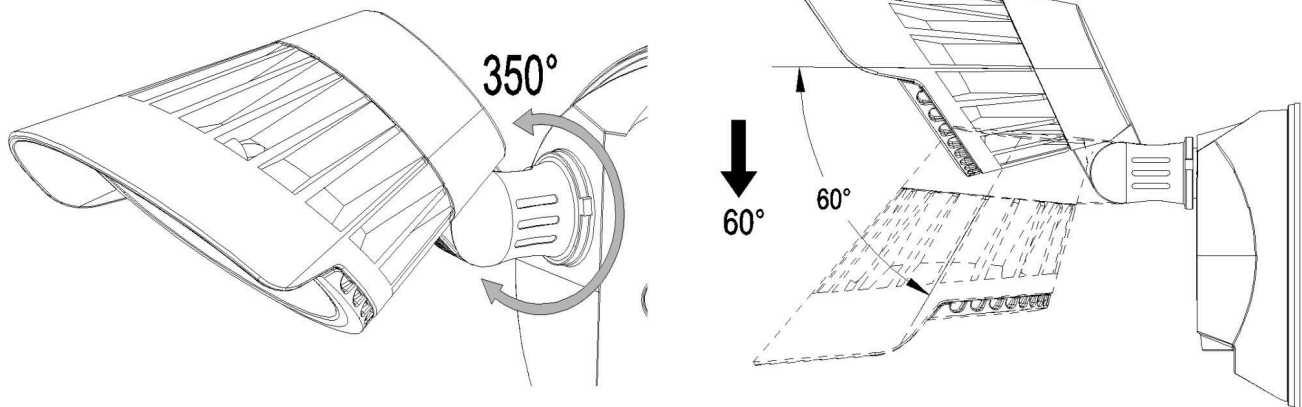
#### Mounting and Wiring the Light



## MODEL OL-2HS

### INSTALLATION GUIDE

#### Adjusting Your Light Heads



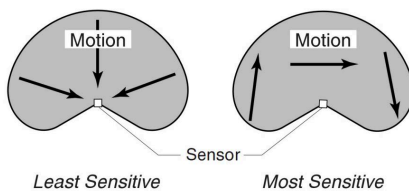
Your light heads can be adjusted by turning the individual light head to desired position. You can also adjust your light head up and down to your desired position.

#### WARNING

Risk of fire. DO NOT aim the bulbs at a combustible surface within 3 ft (1m).

#### Adjusting Your Motion Sensor

Your sensor head can be adjusted by turning the individual light head to detection area. You can also adjust your sensor head up and down to your detection distance.

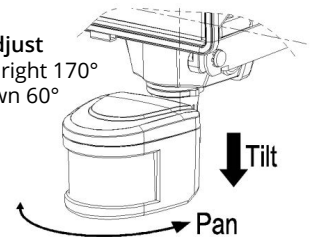


**REMINDER:** If fixture is mounted higher than 8 ft (2.4m), aiming the sensor down will reduce coverage distance. The detector is less sensitive to motion directly towards it.

Sensor head adjust

**Pan:** left 170° / right 170°

**Tilt:** up 0° / down 60°



#### CAUTION

Keep the sensor at least 2" (51 mm) away from the lamps.

#### Installation

For easy installation, select an existing light operated by a wall switch for replacement.

For better performance, mount the fixture about 8 ft (2.4m) above the ground.

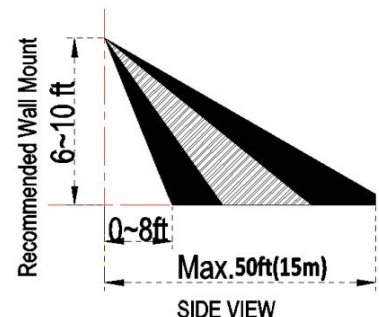
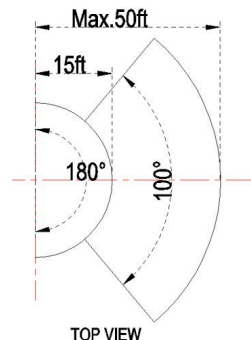
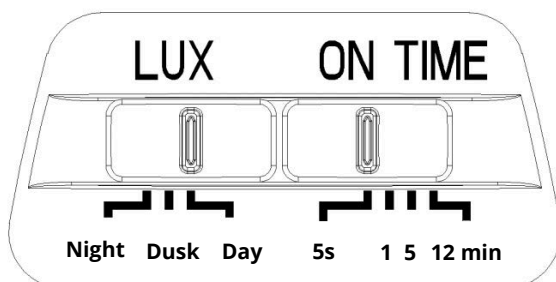
If the fixture is mounted higher than 8 ft (2.4m), aiming the sensor down will reduce coverage distance.

Setting the Motion Sensor

**Detection Range:** 50'

**Detection Angle:** 180°

#### Sensor Detection Range



### INSTALLATION GUIDE

#### REMINDER

You **MUST** adjust the motion sensor on the light to the desired area before you can adjust the time and LUX settings.

#### Time Setting

This setting controls the time span of how long your security light will remain ON. The time setting will allow you to set the time period the light will stay ON. Slide the switch to the amount of time you would like the light to stay ON (See illustration on the previous page SENSOR DETECTION RANGE section. Dials are located on the bottom side of the motion detector)

#### LUX Setting

The LUX setting controls when the light will come ON. It controls the amount of light needed to turn the light ON. The LUX setting is marked by the sun and moon. Use one of the three predetermined settings as illustrated in the illustration on the previous page SENSOR DETECTION RANGE section. To adjust the light to come ON when it is darker outside, slide the switch to "L". To adjust the light to come ON at dusk, slide the switch to "M". To adjust the light to come ON when it is lighter outside, slide the switch to the "H".

#### Avoid aiming the control at:

- Objects that change temperature rapidly, such as **heating vents and air conditioners**. These heat sources could cause false triggering
- Areas where **pets or traffic** may trigger the control
- **Nearby large, light coloured objects** reflecting light may trigger the shut-off feature. DO NOT point other lights at the sensor

#### REMINDER

Sensor has a 1-1/2 minute warm up period before it will detect motion. When first turned ON, wait for 1-1/2 minute.

### TROUBLESHOOTING

#### Lights will not come on:

1. Light switch is turned OFF
2. Light is loose or burned out
3. Fuse is blown or circuit breaker is turned OFF
4. Daylight turnoff is in effect (double-check after dark)
5. Incorrect circuit wiring, if this is a new installation
6. Re-aim the sensor to cover desired area

#### Lights stay ON continuously:

1. A lamp is positioned too close to the sensor or pointed at nearby objects that cause heat to trigger the sensor (reposition the lamp away from the sensor or nearby objects)
2. Light control is pointed toward a heat source like an air vent, dryer vent, or brightly-painted heat reflective surface (Reposition sensor. Reduce Range)

#### Lights come on for no apparent reason:

1. Light control may be sensing small animals or automobile traffic (re-aim the sensor)
2. Range is set too high (reduce range setting)

#### Lights come on in daylight:

1. Light control may be installed in a relatively dark location

#### Lights flash ON and OFF:

1. Heat or light from the lamps may be turning the light control ON and OFF (Reposition the lamps away from the sensor)
2. Heat being reflected from other objects may be affecting the sensor (Reposition sensor)

### MAINTENANCE

To clean the surface of the light, use mild soap and water.

DO NOT use scouring pads, powders, steel wool or any other abrasive materials. DO NOT immerse in water.

ORTECH reserves the right to modify at any time, without notice, any or all of our product's features, designs, components and specifications to meet market changes.