

LED Linear Strip Lights

MODEL OL4-ST4FT 347V | OL4-ST8FT 347V

WARNING

WARNING — THE INSTALLATION MUST BE CARRIED OUT BY A QUALIFIED ELECTRICIAN.



1. LED Linear Strip Lights are suitable for using in damp locations
2. Please keep the LED Linear Strip Lights away from any corrosive substance, and please use dry cloth when you clean it
3. LED Linear Strip Lights can only be installed by a qualified electrician
4. Before installation or maintenance, please disconnect the power to prevent electric shock

Application Notice

1. Please check and make sure there is no sign of physical damage to the product when unpacking. DO NOT use damaged products
2. Turn OFF the power at the fuse box or circuit breaker before beginning installation. The fixture is suitable for indoor damp locations
3. DO NOT use or install this product in areas of direct weather exposure or near sources of water and/or heat
4. Please keep this device out of the reach of children under 3 years of age

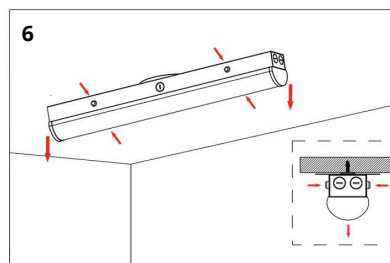
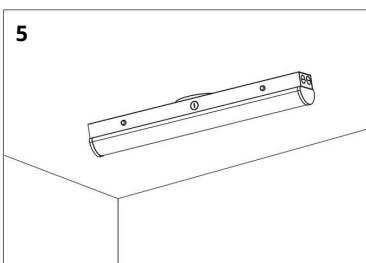
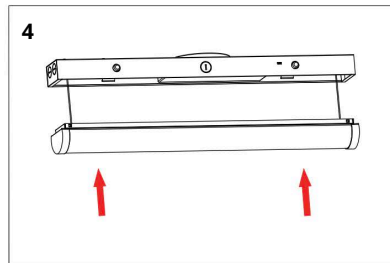
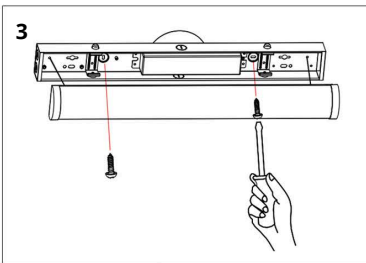
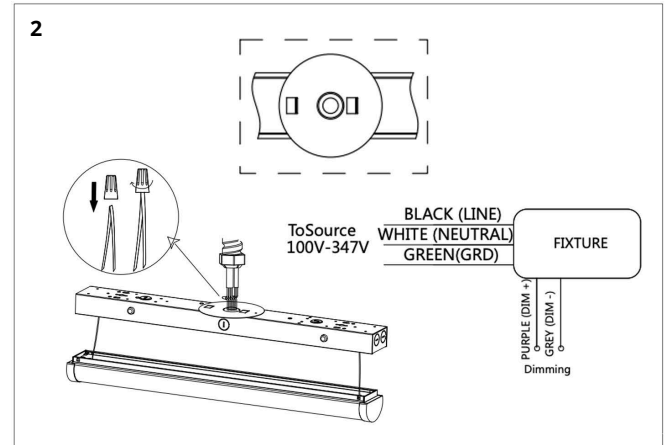
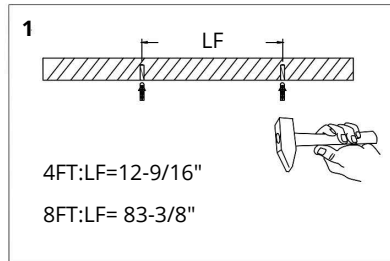
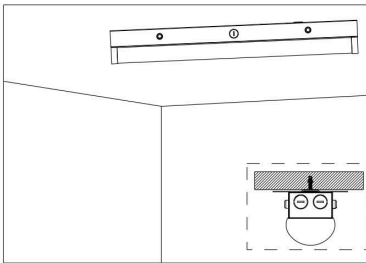
CAUTION

PLEASE READ INSTRUCTION BEFORE COMMENCING INSTALLATION AND RETAIN FOR FUTURE REFERENCES.

Electrical products can cause death or injury, or damage to property.

If in any doubt about the installation or use of this product, consult a competent electrician.

INSTALLATION GUIDE



Surface-mounted Installation

1. Punch a hole on the wall and put the expansion tube inside
2. Turn OFF the power and wiring by using wire nuts
3. Secure the fixture on the wall and lock it in tight
4. Press upward the cover and lock it with springs tightly which is located into the fixture
5. Installation is complete
6. Press the buckle on both sides and remove if you need to disassemble the cover

ORTECH reserves the right to modify at any time, without notice, any or all of our product's features, designs, components and specifications to meet market changes.