

## PUK LIGHTS PUK SS



### WARNING

**WARNING — THE INSTALLATION MUST BE CARRIED OUT BY A QUALIFIED ELECTRICIAN.**

- LED Puk lights are suitable for indoor use only
- Please keep the LED Puk lights away from any corrosive substance, and please use dry cloth when you clean it
- Before installation or maintenance, please disconnect the power to prevent electric shock

### CAUTION

**PLEASE READ INSTRUCTION BEFORE COMMENCING INSTALLATION AND RETAIN FOR FUTURE REFERENCES.**

- Electrical products can cause death or injury, or damage to property.
- If in any doubt about the installation or use of this product, consult a competent electrician.

### APPLICATION NOTICE

1. For your safety, this fixture **MUST** be wired in accordance to local electrical codes and ordinances. All work should be done by a qualified electrician
2. Always consider voltage drop effect when linking fixtures together. For voltage drop calculations and guidelines, please consult [www.liteline.com/ledinfo](http://www.liteline.com/ledinfo)
3. Make sure certain power is OFF from the electrical panel before starting installation or attempting any maintenance. Indoor installation only
4. To extend driver life span, **DO NOT** exceed 80% of driver rated load
5. To be used only with listed class 2 power supplies

### TOOLS REQUIRED



Screw Driver



Power Drill



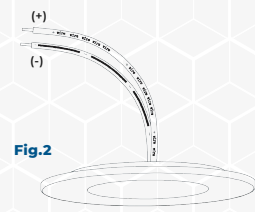
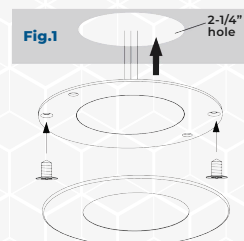
2-1/4" Forstner Bit

### INCLUDED COMPONENTS

- 1 x Micro LED light
- Mounting hardware

### INSTALLATION GUIDE

1. Open packaging and place all components onto a clean surface
2. Turn power OFF from the electrical panel before starting installation
3. **For recessed mounting:** Remove the trim ring from the puk light and remove the LED light completely from surface mounting ring. With a screw driver (supplied by others) detach the torsion clips from the LED puk light. In your desired area, **drill a 2-1/4" hole**, using a cut hole saw (supplied by others). Run the wires through the cut hole, and then secure the LED puk light to medium with screws provided (**see Fig.1**). Connect the trim ring back to the LED puk light magnetic tabs.



ORTECH reserves the right to modify at any time, without notice, any or all of our product's features, designs, components and specifications to meet market changes.



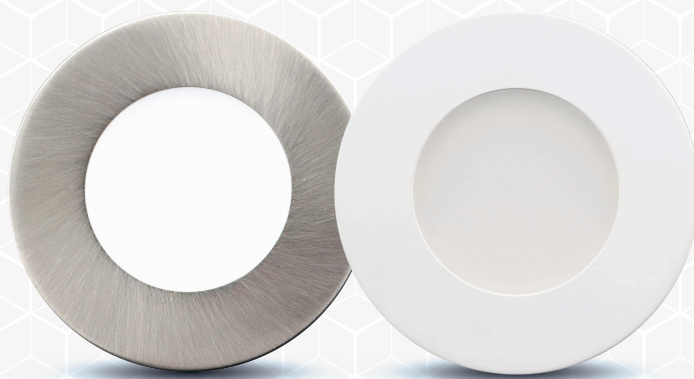
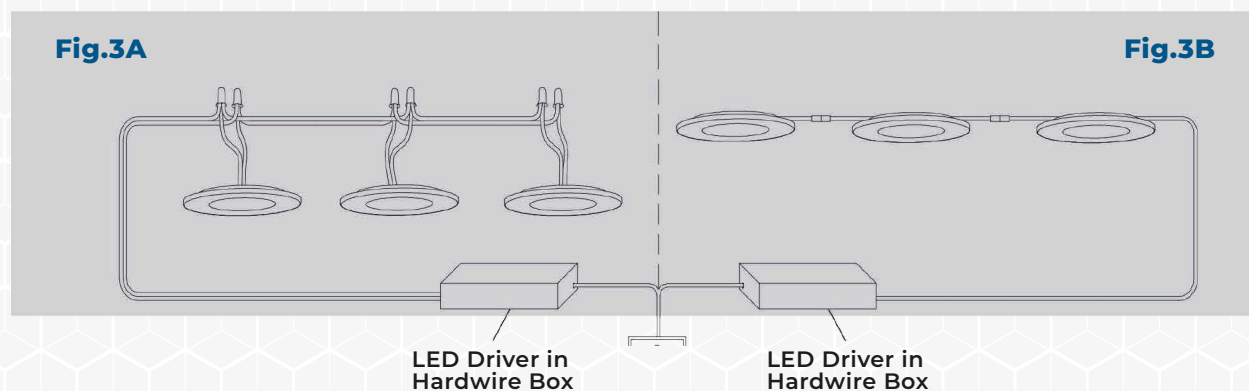
## INSTALLATION GUIDE

4. **For Hardwire:** Use wire type and gauge suitable for application to connect the fixtures, and twist-on wire connectors (supplied by others) [see Fig.3A]. Ensure correct polarity is followed through the line (see Fig.2).

**For Plug-in:** Make a daisy chain connection with male to female DC 2.1 connection. Attach DC 2.1 connector to a power feed from the 12V constant voltage driver (see Fig.3B).

5. Rest driver to the desired secured location.

6. Once assembly is complete, turn on power to confirm fixture is working properly.



ORTECH reserves the right to modify at any time, without notice, any or all of our product's features, designs, components and specifications to meet market changes.

