

MODEL SLIM4CONT-WH



WARNING

WARNING — THE INSTALLATION MUST BE CARRIED OUT BY A QUALIFIED ELECTRICIAN.

1. LED Slim Lights are suitable for indoor use only. DO NOT use outdoors
2. Please keep the LED Slim Lights away from any corrosive substance, and please use dry cloth when you clean them
3. LED Slim Lights can only be installed by a qualified electrician
4. Before installation or maintenance, please disconnect the power to prevent electric shock

Application Notice

1. For your safety, this fixture MUST be wired in accordance to electrical codes and ordinances
2. DO NOT modify this fixture. Any modifications may render the product unsafe

CAUTION

PLEASE READ INSTRUCTION BEFORE COMMENCING INSTALLATION AND RETAIN FOR FUTURE REFERENCES.

Electrical products can cause death or injury, or damage to property.

If in any doubt about the installation or use of this product, consult a competent electrician.

INSTALLATION GUIDE

Fig.1

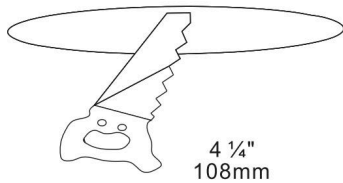
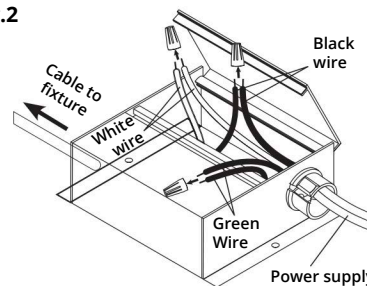


Fig.2



Parts List

- Junction Box
- Light Panel
- Clips
- Connector

Fig.3

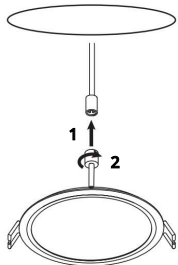
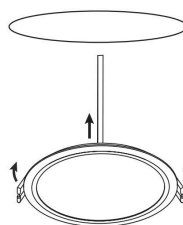


Fig.4



Light Source

- Integrated LED 9W

1. Turn power OFF from the electrical panel prior to installation
2. Determine the location where you want to install the fixture and cut a 4-1/4" (108 mm) hole in the ceiling according to the template on the box (also see Fig.1 above)
3. Open the junction box cover and remove the appropriate knockout(s) on the side panel (see Fig.2 above)
4. Insert the electrical supply cable through the knockout and secure with a cable connector (sold separately)
5. Using quick-connect push-in terminals, connect the GROUND wire to the GROUND wire terminal; BLACK wire to BLACK wire terminal; WHITE wire to WHITE wire terminal (also see Fig.2 above)
6. Place all wiring and connections back into the junction box and close the cover. Connect the driver to the light panel
7. Insert the junction box through the mounting hole (see Fig.3 above)
8. Push clips on the fixture upwards and insert fixture base into the mounting hole. Release the clips and fixture will be pulled flush to the ceiling (also see Fig.4 above)