



WARNING

WARNING — THE INSTALLATION MUST BE CARRIED OUT BY A QUALIFIED ELECTRICIAN.

1. LED Wall Packs are suitable for using in wet locations
2. Please keep the LED Wall Packs away from any corrosive substance, and please use dry cloth when you clean it
3. LED Wall Packs can only be installed by a qualified electrician
4. Before installation or maintenance, please disconnect the power to prevent electric shock

Application Notice

1. Before starting your installation, disconnect the power by turning off the circuit breaker or by removing the fuse at the fuse box
2. All electrical connections MUST be in accordance with all ordinances, Local and National Electrical Codes
3. These fixtures are intended for mounting to a standard 4" x 2-1/2" metal octagon outlet box
4. Just turning the light OFF at the light switch is NOT sufficient to prevent electrical shock
5. The box MUST be directly supported by the building structure and U.L. Recognized

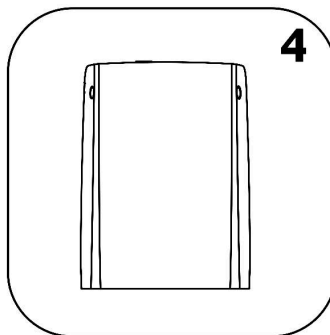
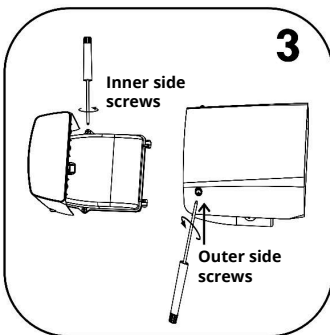
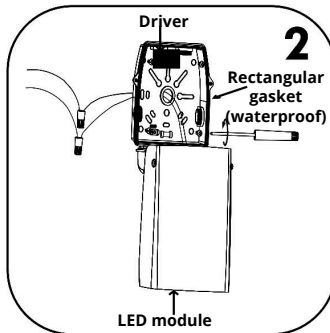
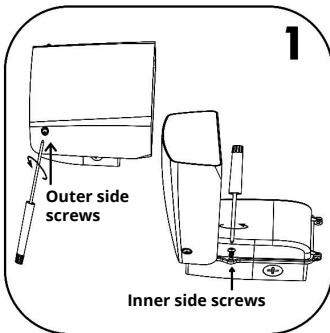
CAUTION

PLEASE READ INSTRUCTION BEFORE COMMENCING INSTALLATION AND RETAIN FOR FUTURE REFERENCES.

Electrical products can cause death or injury, or damage to property.

If in any doubt about the installation or use of this product, consult a competent electrician.

INSTALLATION GUIDE



1. Prepare Fixture

If there is an existing fixture, remove it. Loosen both outer side screws and open the housing. Now loosen both inner side screws

2. Mount the Mounting Box & Make Wire Connections

Expose the supply wires from the J-Box. Mount the mounting box to the J-Box with the supplied screws. Secure with the supplied wire nuts. Connect the white supply wires to the white/blue fixture wire. Secure with the supplied wire nuts. Either wrap the green wire around one of the protruding screws or connect it to the supply ground wire. Secure all wires with electrical tape (not supplied)

3. Complete the Assembly

Tighten the inner side screws, close the housing. Then, tighten the outer side screws. * This fixture is wet location rated. In order to ensure that moisture does not enter the outlet box and cause a short circuit, clear caulking should be used to seal the space between the fixture mounting bracket and the wall. Ensure that a space is left at the bottom to allow for the escape of moisture. It is recommended that Outdoor Silicon Sealant be used for that purpose*

4. Restore the Electricity & Check the Operation of Your New Access Lighting Fixture

What You Need:

- Screwdriver
- Wire cutters
- Wiring supplies as specified by Electrical Code

What We Provide:

- Mounting hardware
- LED

ORTECH reserves the right to modify at any time, without notice, any or all of our product's features, designs, components and specifications to meet market changes.