

LED Linear Pendant Lights

MODEL LPL-2FT-30W | LPL-4FT-60W (Linkable)

HIGHLIGHTS

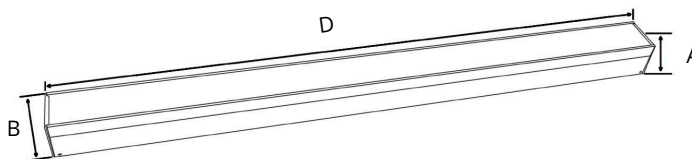
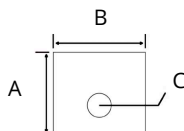
- LED linkable Linear pendant lights in 100-277V AC with superior heat dissipation
- Made up of aluminum body and heat sink, polycarbonate lens, and LED chips
- Can be used in places such as office, supermarket, classroom and retail store
- Includes linkable brackets and two ON / OFF switches on the side
- Linkable — pre-wired inside, with quick connector at each end
- Replaceable LED strips and excellent light output



SPECIFICATIONS

Model	LPL-2FT-30W	LPL-4FT-60W
Wattage	30W (6W up and 24W down)	60W (10W up and 50W down)
Voltage	100-277V AC /50-60Hz	
Lumens	3150 lmn (105 lmn per Watt)	6300 lmn (105 lmn per Watt)
Beam Angle	107°	
Lifetime	50000 hours	
CRI	> 83	
Dimmable	No	
Rating	Non-IC Rated / Indoor use / for Dry and Damp locations	
Grade of Protection	IP 40	
Applications	Office / School / Meeting room	
Colour Temp.	4000K (Natural White)	
Operating Temp.	-20°C ~ +40°C	
Accessory Included	1m suspended accessory / 1m power cable	

DIMENSIONS



	A	B	C	D
LPL-2FT-30W	2-29/32" (74mm)	3-5/16" (84mm)	55/64" (22mm)	22-61/64" (583mm)
LPL-4FT-60W				46-31/32" (1193mm)

Reference	QTY.	Remarks	Project:
			Location:
			Architect:
			Engineer:
			Contractor:
			Submitted by:
			Date: