

LED LINEAR STRIP LIGHTS

OL-ST4-3CCT+WMS

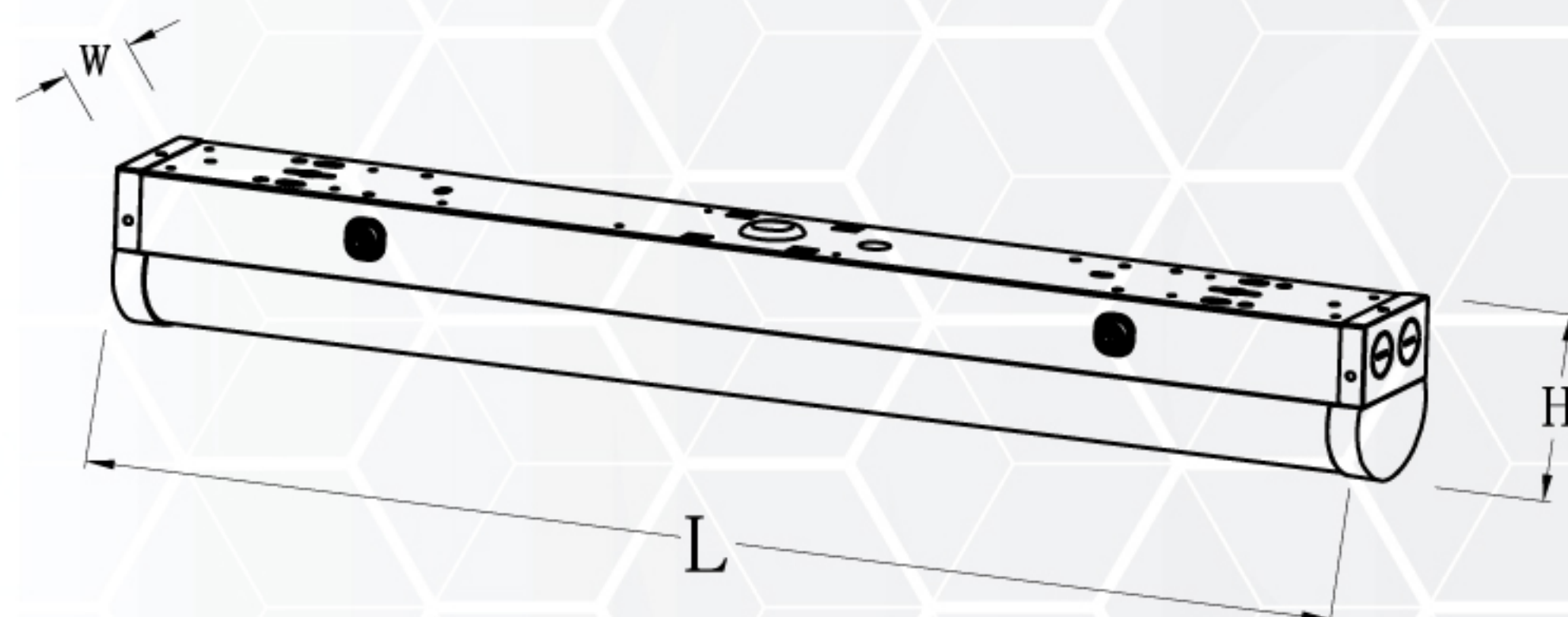
HIGHLIGHTS

48" LED Strip Light Power & CCT adjusted, with Built-in Motion Sensor

- Built-in motion sensor with dip switches
- Factory setting: dims to 50%. Please see page 3 for more dimmer and sensor settings
- Daisy connection of up to 24 units per single power source running 347v
- Suspending installation and surface-mounted installation
- Diffused light, Damp location rated, Polycarbonate lens
- 5 year warranty



DIMENSIONS



Model	LxWxH (mm/inch)
OL-ST4-3CCT+WMS	1185x74x83(mm) / 46.65"x2.91"x3.27

SPECIFICATIONS

Model	OL-ST4-3CCT+WMS
Wattage	30W 40W 50W
Voltage	AC120-347V
Lumens	3900lm 5200lm 6500lm
Beam Angle CRI	120° 80
Lifetime	50000 hours
Dimmable	Yes(only 0-10v dimming available)
Warranty	5 years
Grade of Protection	IP20
Luminous Efficiency	130LM/W
Colour Temp.	3500K / 4000K / 5000K
Application	School / Hospital / Super market / Office / Warehouse
Operating Temp.	-20°C ~ +40°C
Case Quantities	8

ACCESSORIES



OL-ST4-LINK-KIT



OL-ST4-SUS-KIT
(aircraft cable length: 4.92ft.)

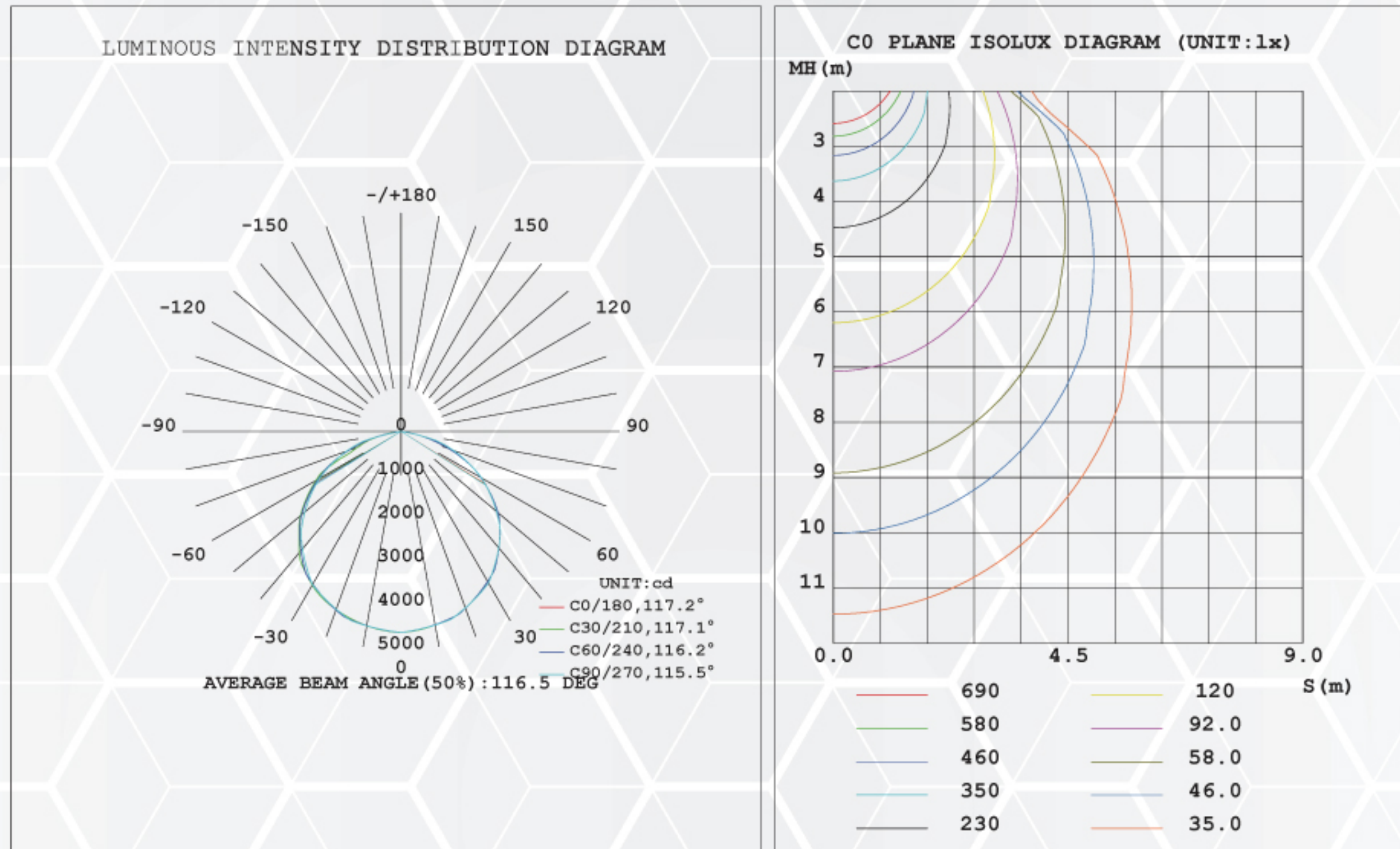
DAISY CONNECTION

- 120V = 10 units
- 277V = 19 units
- 347V = 24 units

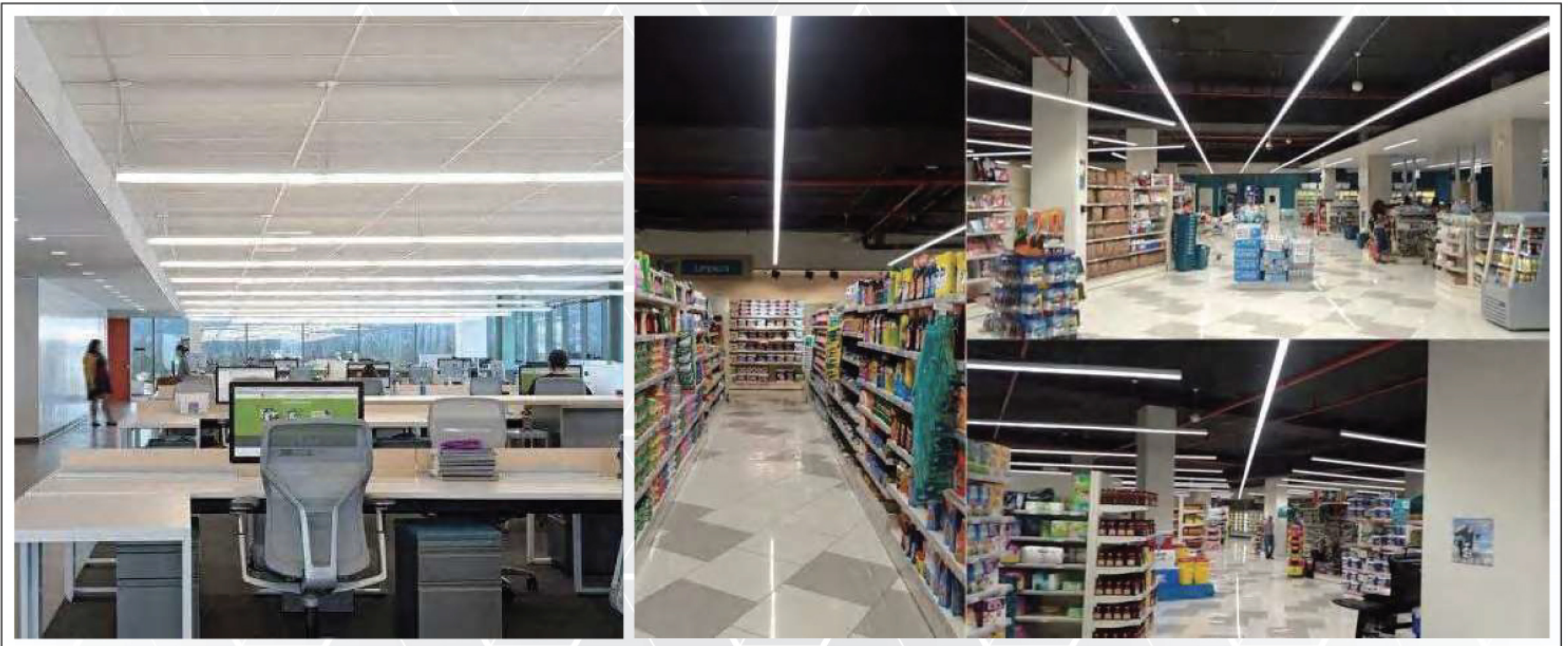
LED LINEAR STRIP LIGHTS

OL-ST4-3CCT+WMS

TESTING REPORT



APPLICATIONS



LED LINEAR STRIP LIGHTS

OL-ST4-3CCT+WMS

MOTION SENSOR SETTINGS

By selecting the combination of the DIP switches, sensor will be precisely set for different applications.

1	
<input checked="" type="radio"/>	100%
<input type="radio"/>	50%

Detection area

In this area, movement will be detected and able to trigger the sensor. 100% detection area is also known as the strong sensitivity.

2	3	
<input checked="" type="radio"/>	<input checked="" type="radio"/>	5s
<input checked="" type="radio"/>	<input type="radio"/>	30s
<input type="radio"/>	<input checked="" type="radio"/>	1min
<input type="radio"/>	<input type="radio"/>	10min

Hold-time

The period of light keeping 100% brightness after moving objects leave the detection area.

4	5	
<input checked="" type="radio"/>	<input checked="" type="radio"/>	Disable
<input checked="" type="radio"/>	<input type="radio"/>	50lux
<input type="radio"/>	<input checked="" type="radio"/>	10lux
<input type="radio"/>	<input type="radio"/>	2lux

Daylight threshold

Definition of the ambient brightness; only when the ambient brightness is lower than the preset specific lux amount, the sensor will work; when it's preset as "disable", the sensor works every time it detects motion regardless the ambient brightness.

6	7	
<input checked="" type="radio"/>	<input checked="" type="radio"/>	0s
<input checked="" type="radio"/>	<input type="radio"/>	30s
<input type="radio"/>	<input checked="" type="radio"/>	20min
<input type="radio"/>	<input type="radio"/>	+ ∞

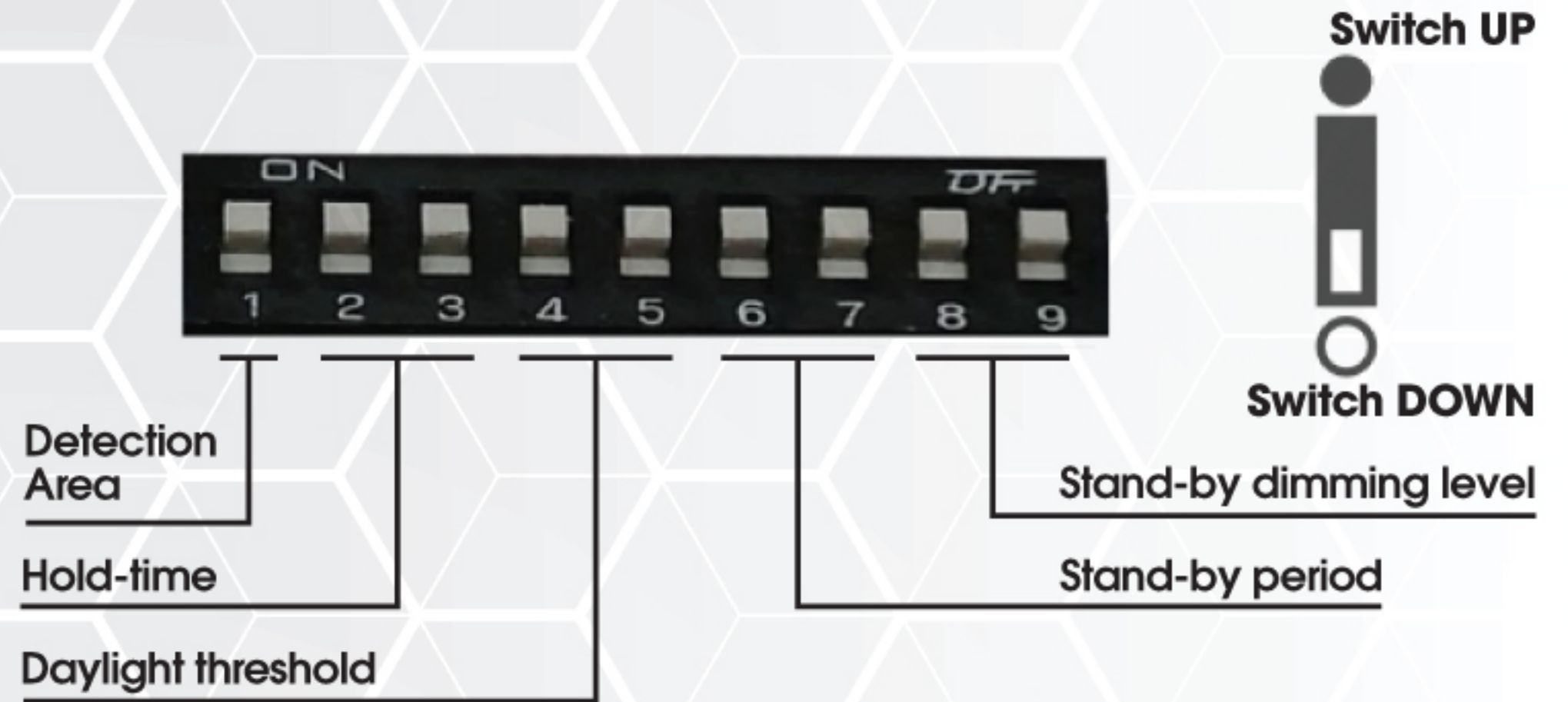
Stand-by period

The period of light keeping low output before it's completely switched off. When it's preset as "∞", the light always keep at low output if no movement in the detection area and doesn't turn off.

8	9	
<input checked="" type="radio"/>	<input checked="" type="radio"/>	10%
<input checked="" type="radio"/>	<input type="radio"/>	20%
<input type="radio"/>	<input checked="" type="radio"/>	30%
<input type="radio"/>	<input type="radio"/>	50%

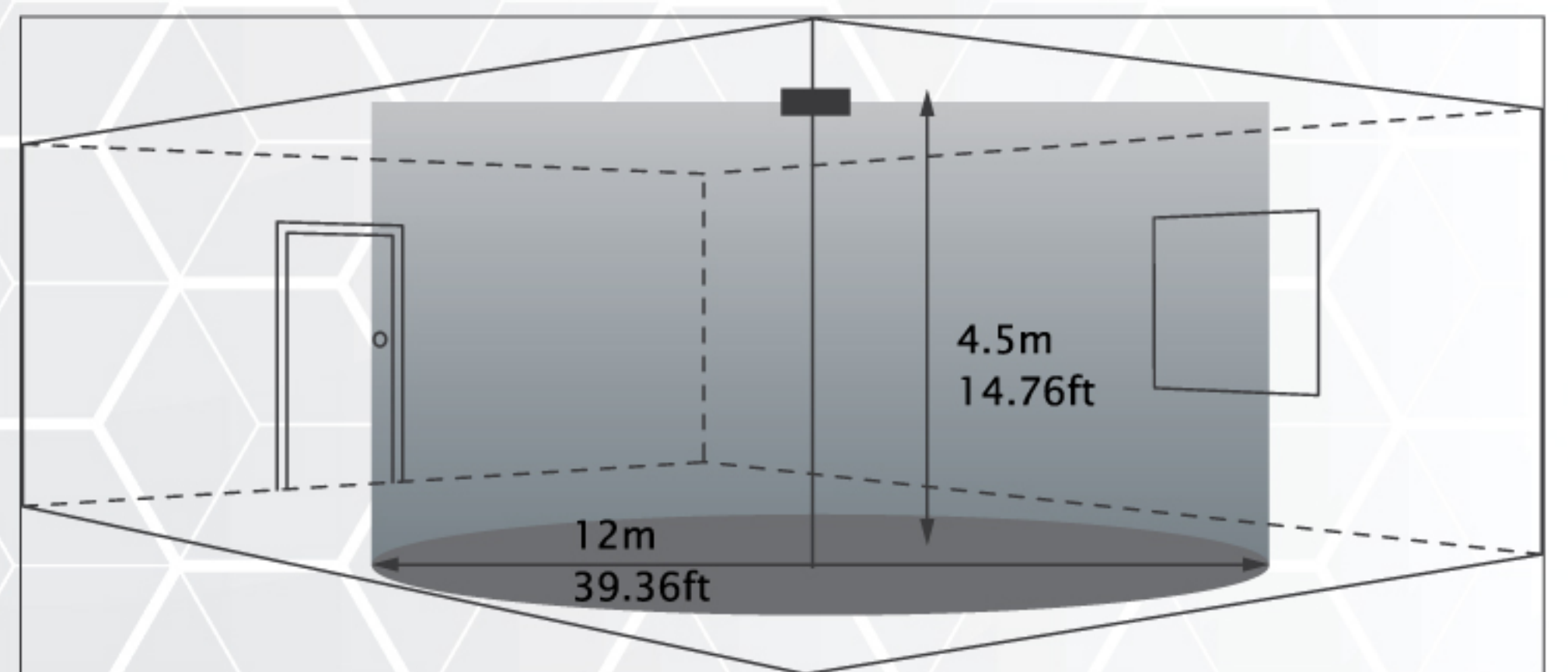
Stand-by dimming level

The definition of low output in the standby period.



Operating voltage	10-15VDC
Stand-by power	<0.5W
Stand-by power	≤1W
Detection area	50%/100%
Hold time	5s/30s/1min/10min
Daylight threshold	2Lux/10Lux/50Lux/Disable
Stand-by period	0s/30s/20min/+∞
Stand-by dimming level	10%/20%/30%/50%
Microwave frequency	5.8GHz±75MHz
Microwave power	<1mW
Mounting height	Max. 4.5m/14.76ft (ceiling mounted)
Detection range	Max.ø12m/39.36ft (ceiling mounted)
Operating temperature	-20°C~+60°C
Detection angle	30°-150°
Motion detection	0.5~3m/s
IP rating	IP20
Warranty	5 years

Detection Range



Reference	QTY.	Remarks	Project:
			Location:
			Architect:
			Engineer:
			Contractor:
			Submitted by:
			Date:

ORTECH reserves the right to modify at any time, without notice, any or all of our product's features, designs, components and specifications to meet market changes.

