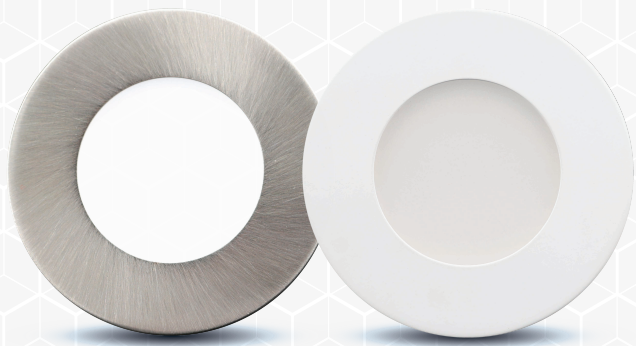


## PUK LIGHTS PUK SS



### HIGHLIGHTS

#### Super Slim LED Puk Light For Mounting Under Kitchen Cabinet

- Formed fixture pan with access holes to junction box
- Toolless access to fixture components with removal of 3 decorative nuts
- Perfect enhancement to a wide variety of residential and commercial decors

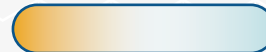


### CERTIFICATIONS



### COLOUR TEMPERATURE

3000K (Warm White) / 5000K (Cool White)



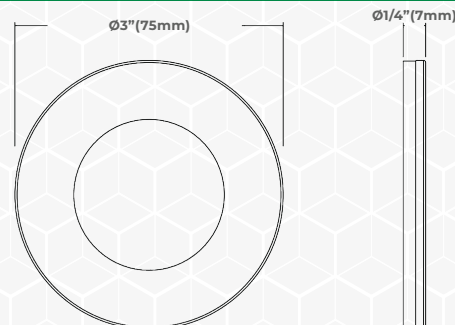
### SPECIFICATIONS

MODEL	PUK SS
Wattage	2.2W
Voltage	12V DC
Lumens	150 lmn
Beam Angle	120°
Lifetime	50,000 hours
Dimmable	Yes
CRI	80
Rating	Non-IC rated/Indoor use/ Damp Location
Grade of Protection	IP42
Operating Temperature	-20°C ~ +40°C
Case Quantities	200

**GREAT THINGS  
COME IN  
SMALL  
PACKAGES**

**5 YEAR WARRANTY**

### DIMENSIONS



ORTECH reserves the right to modify at any time, without notice, any or all of our product's features, designs, components and specifications to meet market changes.



## PUK LIGHTS PUK SS

### CUT HOLE SIZE

Recessed Mounted



Cut Hole Size  
Ø2-1/4" (56mm)



### AVAILABLE FINISHES

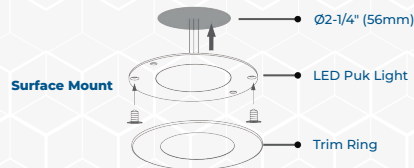
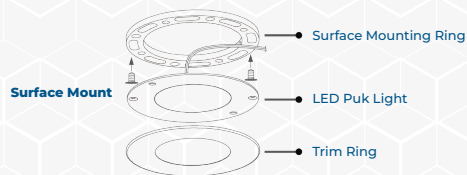


PUK SS-WH (White)



PUK SS-SN (Satin Nickel)

### INSTALLATION



**7mm**  
thickness

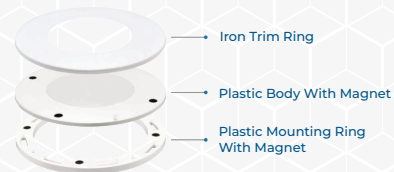
**Ultra**  
Slim Profile

### ACCESSORIES (SOLD SEPARATELY)



**PUK-EXT**  
Extension Cord

### EXPANSION FUNCTION



### COMPATIBLE DRIVERS (SOLD SEPARATELY)



**OT-08D**  
Max. 8W  
class 2 driver



**OT-15D**  
Max. 15W  
class 2 driver



**OT-24D**  
Max. 24W  
class 2 driver



**OT-48D**  
Max. 48W  
class 2 driver



**OT-60D**  
Max. 60W  
class 2 driver



**OT-96D**  
Max. 96W  
class 2 driver

REFERENCE	QUANTITY	REMARKS	PROJECT DETAILS
			Project:
			Location:
			Architect:
			Engineer:
			Contractor:
			Submitted By:
			Date:

ORTECH reserves the right to modify at any time, without notice, any or all of our product's features, designs, components and specifications to meet market changes.

