

MODEL SO8521LED

Description

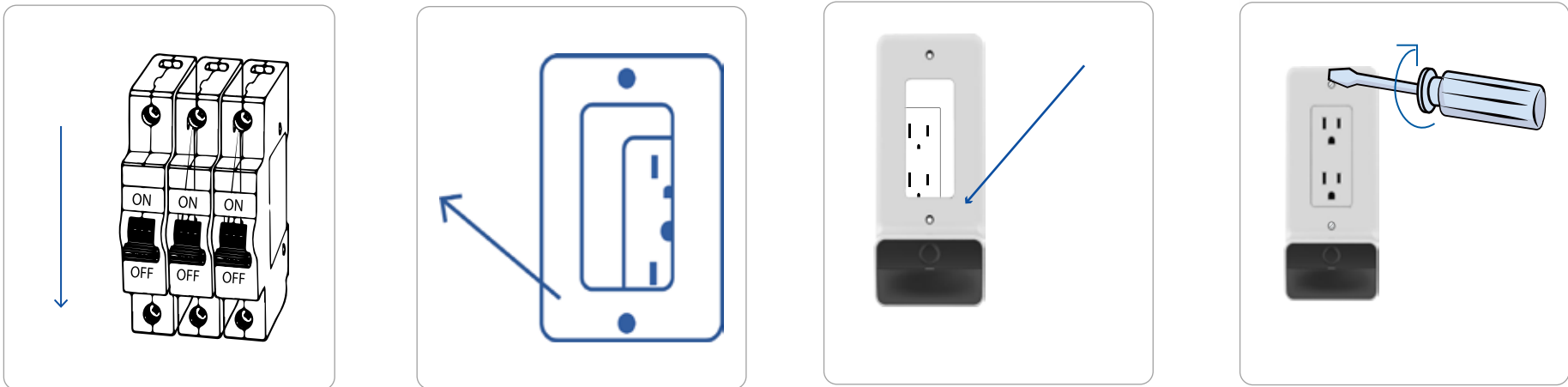
- Wall plate night light
- Input Voltage: 120VAC
- Power: 0.3W
- Dimensions: 153 x 72 x 44mm
- Reaction Area : 150 degree
- Reaction Range : 4M
- Lumens: 20
- 2 year warranty

Compatible with 15A and 20A Decor Outlets

Features and Benefits

- Innovative U.S Standard wall plate with night light wiht light and motion sensor
- Built-in light and motion sensor
- Suit for decor socket
- Light on or off automatically according to the light and motion

Installation Instructions



- Step 1: Turn off the power
- Step 2: Remove the existing faceplate cover
- Step 3: Put on the wall plate night light
- Step 4: Screw on the wall plate and use it



Reference	QTY.	Remarks	Project:
			Location:
			Architect:
			Engineer:
			Contractor:
			Submitted by:
			Date: