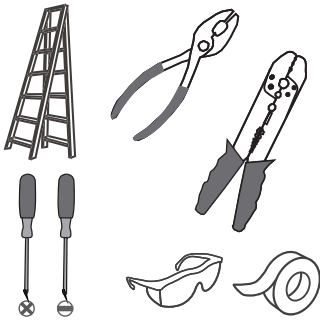
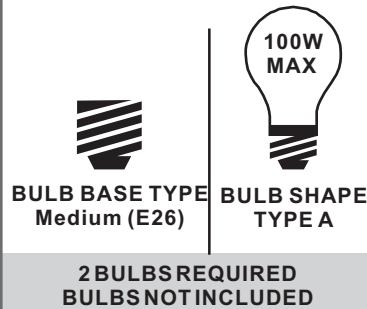


### Tools Required



### Light Source



### Warnings and Cautions

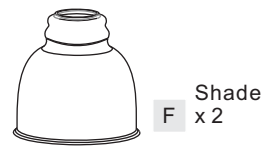
Turn off the electricity at the circuit breaker before installation. Consult a licensed electrician if in doubt about installation.

Turn off power to the fixture and allow the bulbs to cool before replacing.

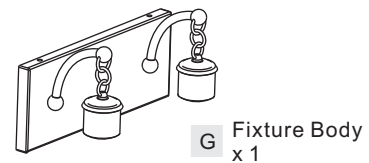
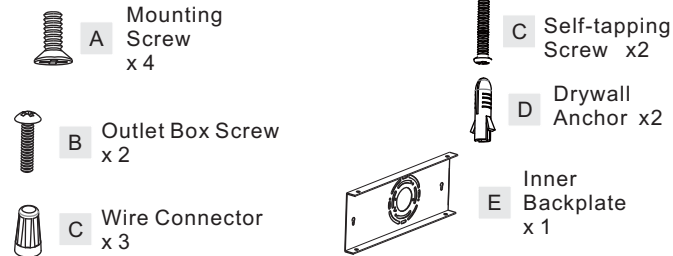
### Package Contents

**Preparation:** Identify and inspect all parts before beginning the installation.

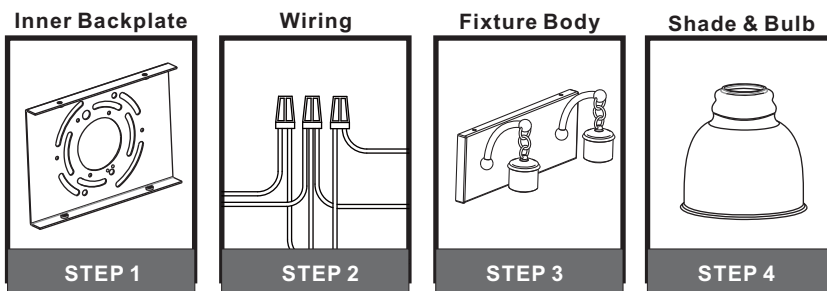
Missing or damaged parts? Contact your original place of purchase.



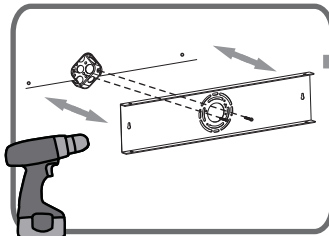
#### PARTS BAG



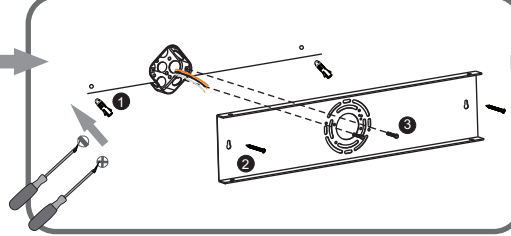
### Table of Contents



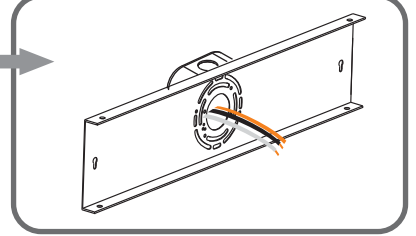
### STEP 1



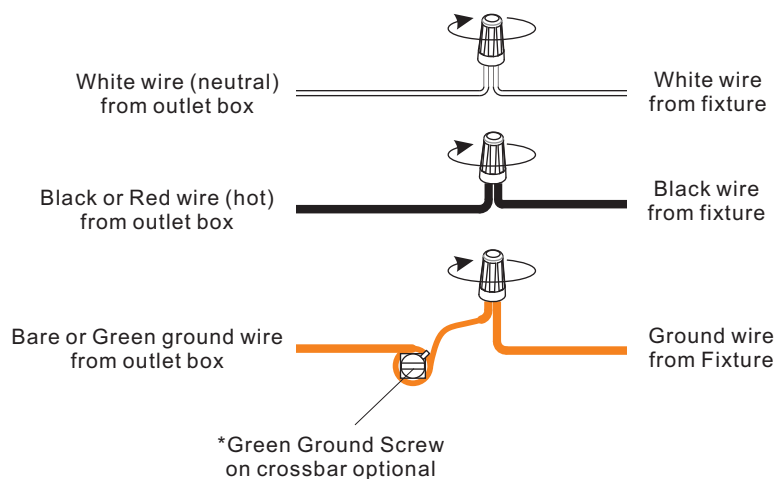
Using a pencil (not included), mark the locations on the wall that correspond with the holes on inner backplate. Using a 5/16-inch drill bit (not included), drill pilot holes at marked locations.



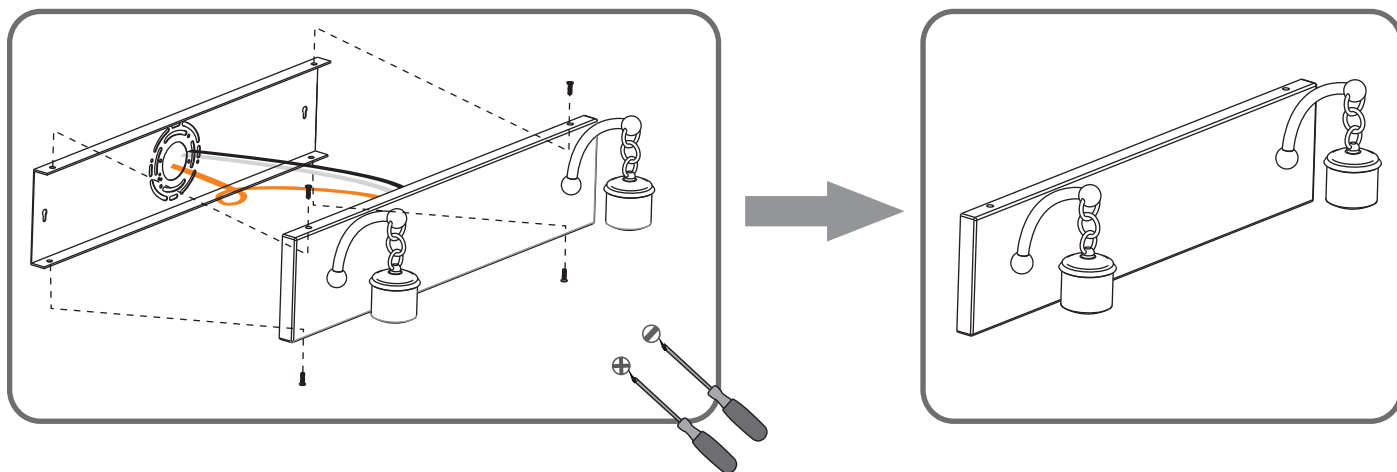
For drywall installations, insert wall anchors into the holes. Otherwise, secure crossbar assembly using self-tapping screws. Then, fully tighten the outlet box screws.  
**CAUTION:** Do not overtighten the screws as damage to the bracket could occur.



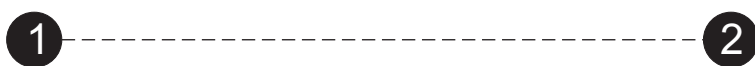
## STEP 2



## STEP 3



## STEP 4



Adjust wires or hook slightly to level the glass

