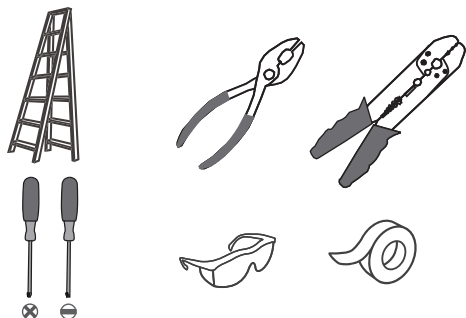


### Tools Required



### Light Source

44W  
**LED**

### Fixture Height Adjustable 68" to 120.25"

#### **Warnings and Cautions**

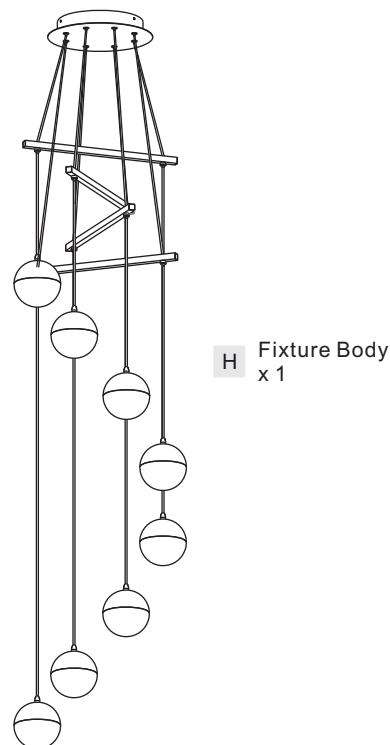
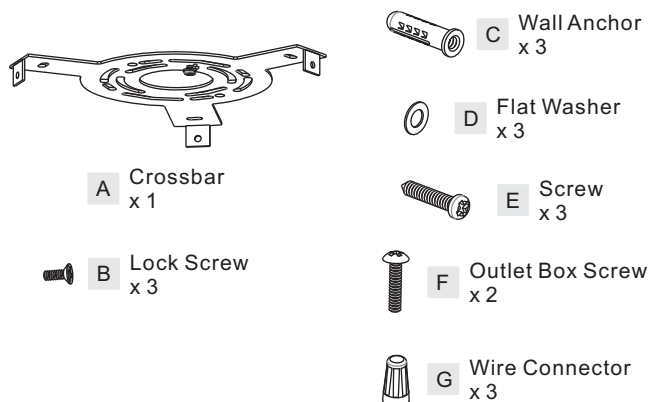
Turn off the electricity at the circuit breaker before installation. Consult a licensed electrician if in doubt about installation.

### Package Contents

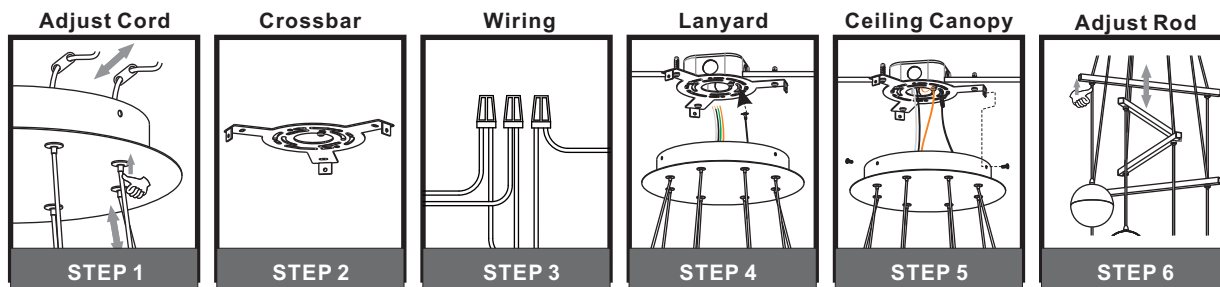
**Preparation:** Identify and inspect all parts before beginning the installation.

Missing or damaged parts? Contact your original place of purchase.

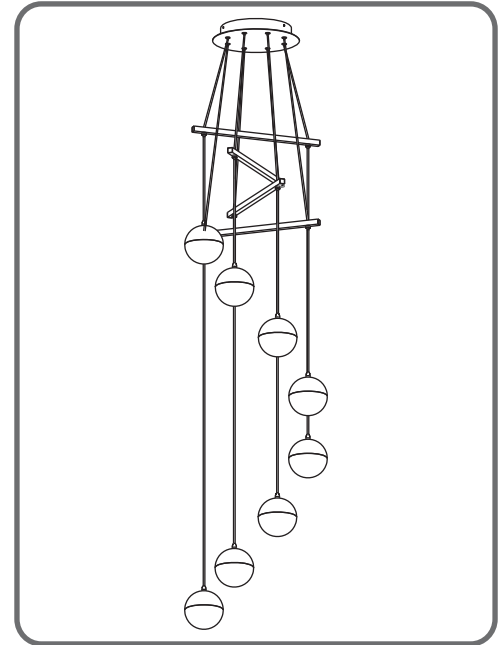
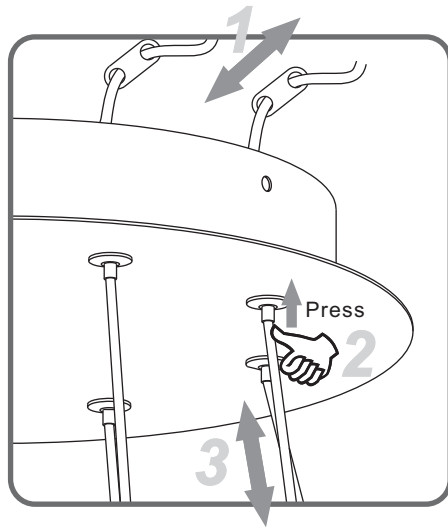
#### PARTS BAG



### Table of Contents



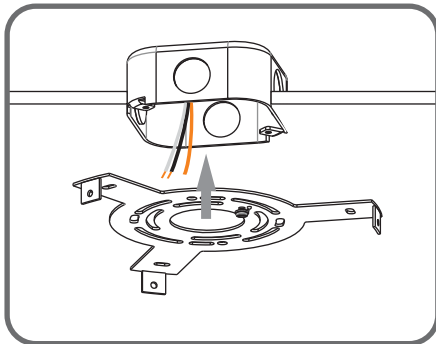
## STEP 1



## STEP 2

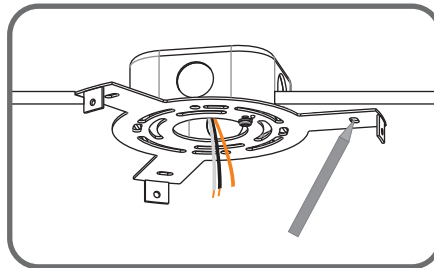
1

Fit crossbar to outlet box



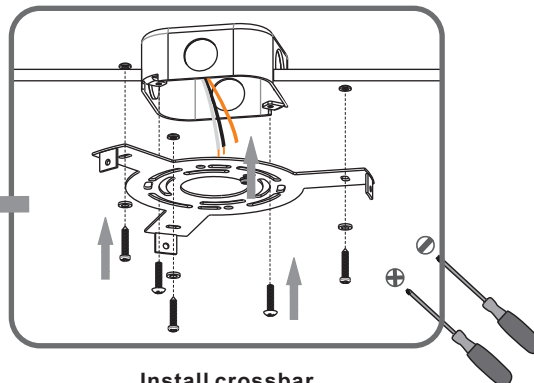
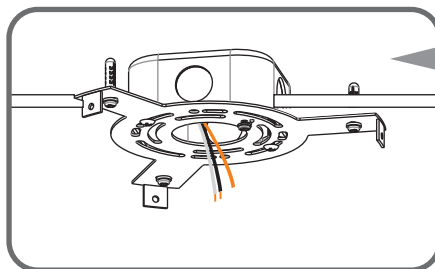
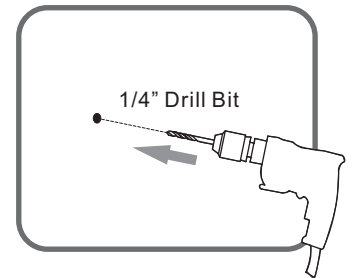
2

Mark Anchor Holes  
Location on the Ceiling

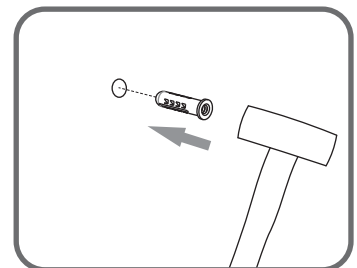


3

Drill Holes for Anchors  
from marks



Install crossbar

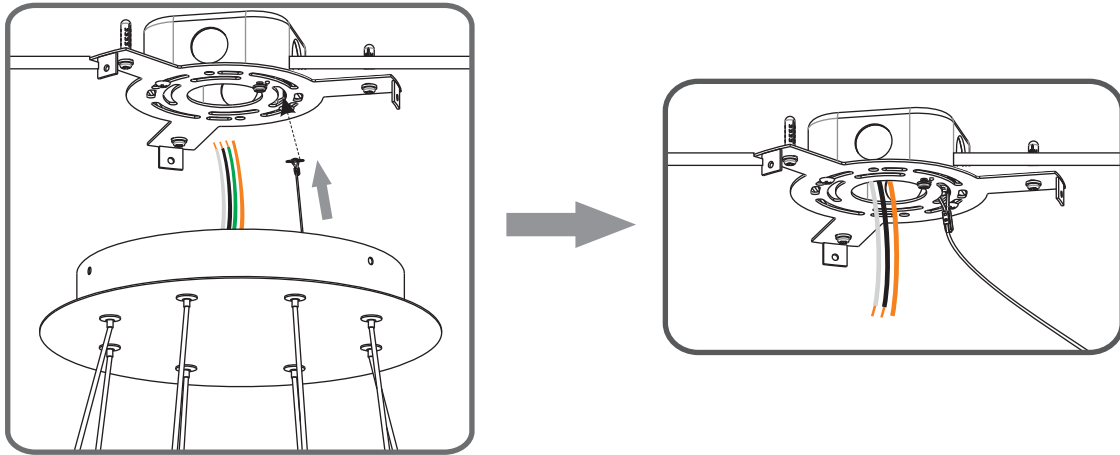


Install Wall Anchors

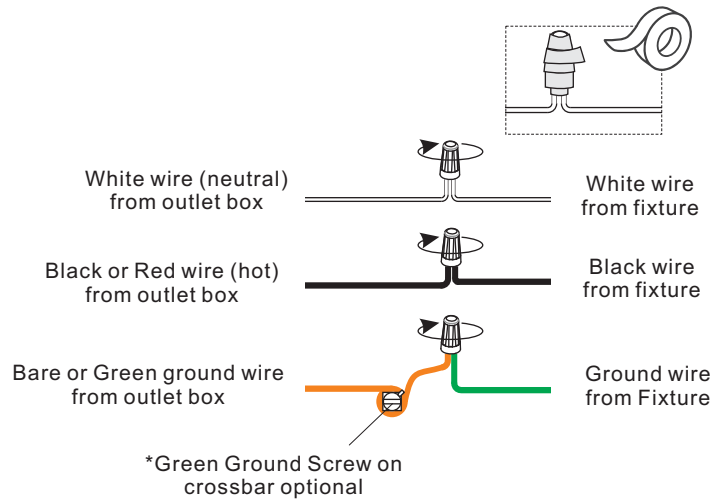
5

4

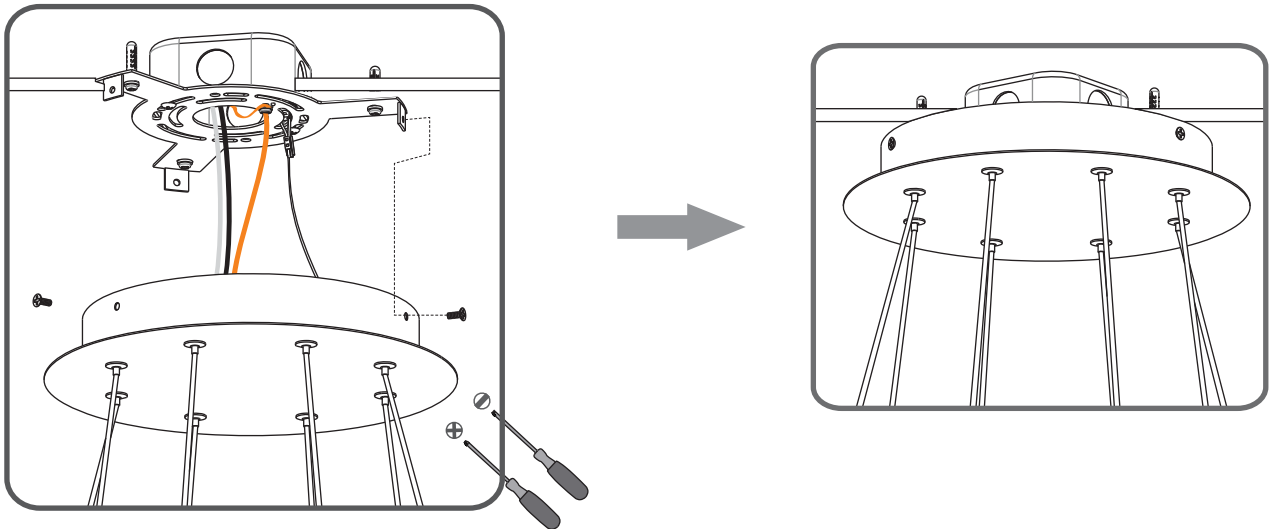
### STEP 3



### STEP 4



### STEP 5



**STEP 6 - Optional**

