

The WRUD4 is an architectural, specification grade up-down light with advanced optics available in three sizes and custom colour finishes.



APPLICATIONS

Ideal for perimeter lighting in retail buildings, atriums, condominiums and other architectural properties.

Project	
Type	
Date	
Notes	

SPECIFICATIONS

Construction

WRUD4 has an extruded aluminum housing with a powder coat paint finish. The fixture has a clear tempered glass lens which is held in place with a gasket and three stainless steel screws making it approved for wet locations.

Mounting

The fixture can be mounted directly on to the wall and has an easy mounting system. The galvanized steel plate is attached to the wall with 4 screws. The fixture then slides under the two pins and is secured by the two set screws at the bottom.

Optics

The fixture has a standard colour temperature of 5000K. 4000K and 3000K are available as options. The fixture is available with a narrow, medium, wide or extra wide beam.

Electrical

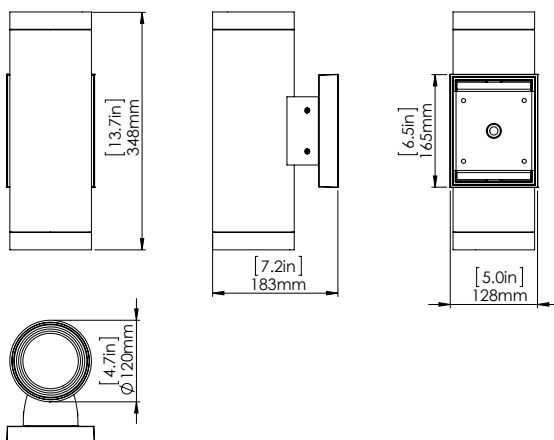
The standard unit has a high efficiency driver that operates at 120-277V. 347V is optional

Finish

Custom colours available.

Diameter	4.7"
Watts	28W
Lumens	2892
Efficiency	105 lumens/watt
Operating Temp	-40°C to +40°C
LED Life	100,000 hours
Colour Temp.	5000K (standard), 4000K, 3000K (option)
Warranty	5 Years
Certification	Approved to uL/CSA standards
Power Factor	0.98
CCT	>80
Total Harmonic Distortion	<20%

DIMENSIONS



Diffusion lens

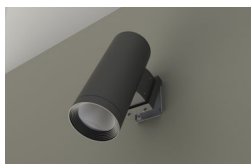


EASY INSTALLATION

Step 1: Attach steel plate on the wall with 4 screws



Step 2: Slide fixture under the two pins till it locks in



Step 3: Secure with 2 set screws on the bottom



ORDERING GUIDE

WRUD4	-	LED30	-		-		-	
		VOLTAGE		COLOUR TEMP		BEAM		FINISH
		B - 120 - 277V*		5K - 5000K*		N - NARROW		SBK - SANDTEX
		C - 347C		4K - 4000K		M - MEDIUM		BLACK*
				3K - 3000K		W - WIDE		CC - CUSTOM
						X - EXTRA WIDE		COLOUR
								(PLEASE SPECIFY)

* Standard configuration