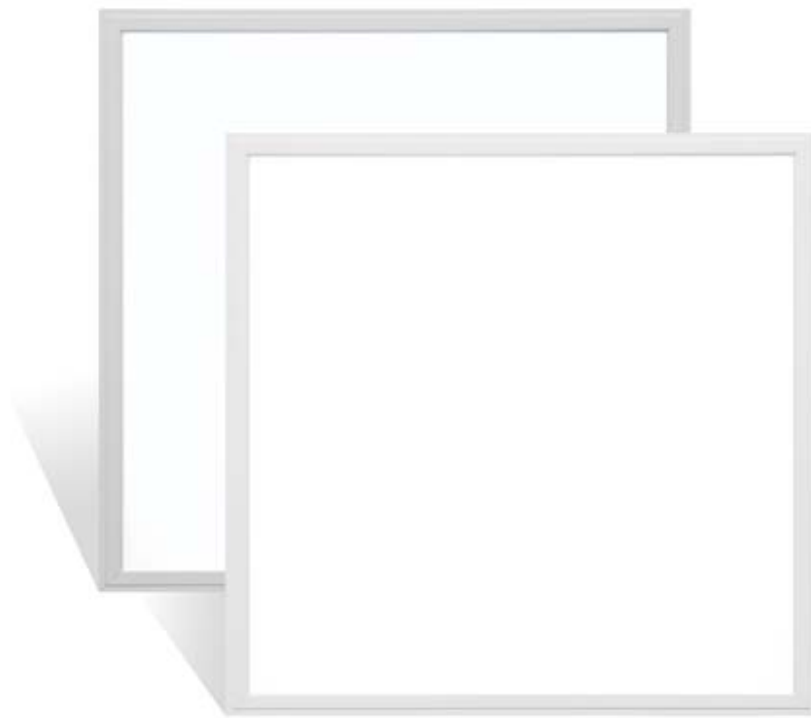


**UL Certified LED Panel Light(0-10V Dimming)**  
**100LM/W, Standard version**

PL-PSCAWXE6060-X40W

PL-PSCAWXE3012-X40W

PL-PSCAWXE6012-X50W



## Specifications

Model	CCT	SIZE (feet)	Color	LED Type	Lumen(lm) (±10%)	CRI	Beam angle	Power(W) (±10%)	Voltage (V)	Dimmer	Current (A)	PF
PL-PSCAWWE6060-X40W	3000K	2*2	warm white	2835	4200 lm	>80	110°	40W	AC100-277V 50/60Hz	0-10V	0.5	>0.95
PL-PSCAWNE6060-X40W	4000K	2*2	natural white		4400 lm	>80	110°					
PL-PSCAWCE6060-X40W	5000K	2*2	cool white		4400 lm	>80	110°					
PL-PSCAWWE3012-X40W	3000K	1*4	warm white	2835	4200 lm	>80	110°	40W	AC100-277V 50/60Hz	0-10V	0.5	>0.95
PL-PSCAWNE3012-X40W	4000K	1*4	natural white		4400 lm	>80	110°					
PL-PSCAWCE3012-X40W	5000K	1*4	cool white		4400 lm	>80	110°					
PL-PSCAWWE6012-X50W	3000K	2*4	warm white	2835	5250 lm	>80	110°	50W	AC100-277V 50/60Hz	0-10V	0.5	>0.95
PL-PSCAWNE6012-X50W	4000K	2*4	natural white		5500 lm	>80	110°					
PL-PSCAWCE6012-X50W	5000K	2*4	cool white		5500 lm	>80	110°					

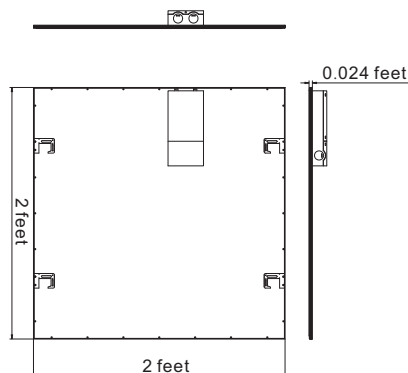
## Applications

X Series Square Panel Light can be used in hotels, meeting rooms, factories, offices, commercial purposes, residential, institution buildings, schools, hospitals, places which needs energy saving and high color rendering index lighting.



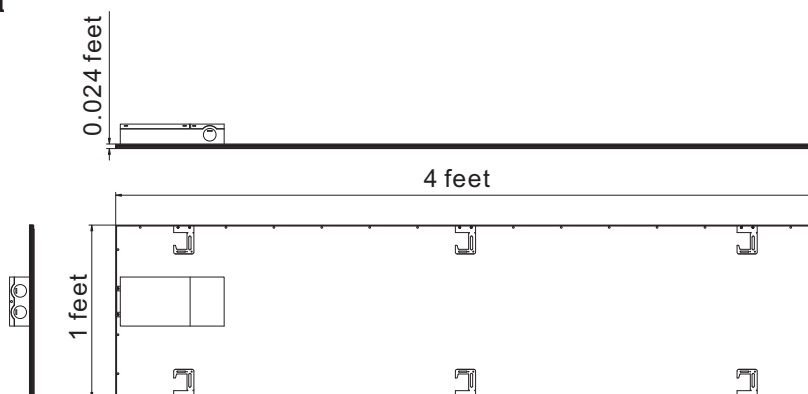
## Dimensions (Unit: feet)

### 2x2 feet



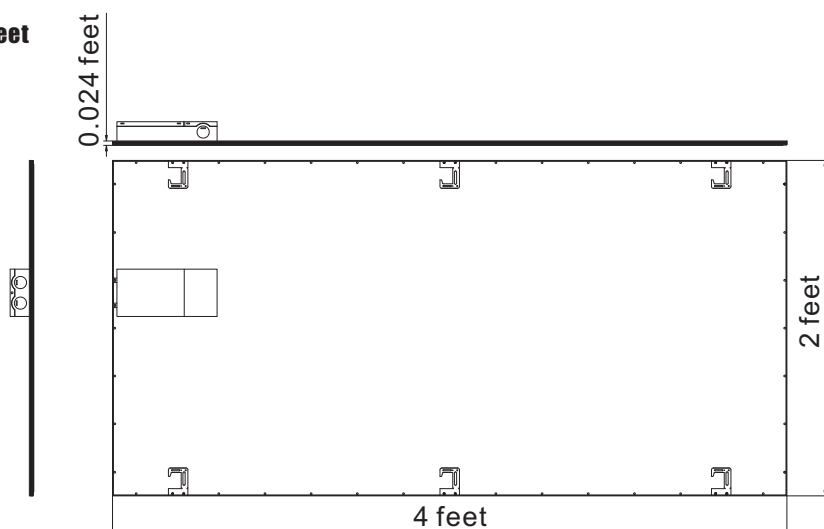
All dimension tolerance is  $\pm 0.5\text{mm}$  unless otherwise noted.

### 1x4 feet



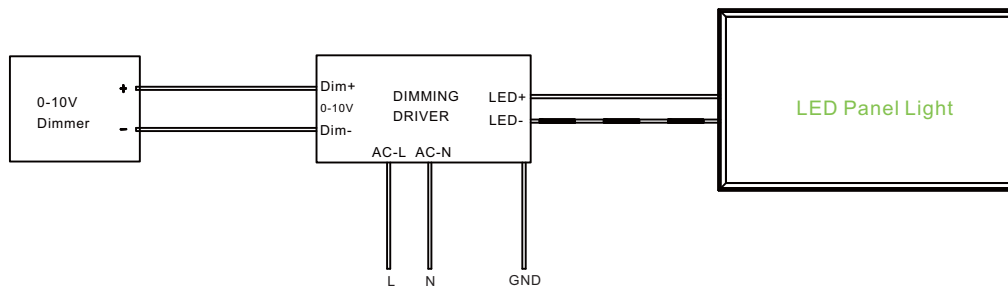
All dimension tolerance is  $\pm 0.5\text{mm}$  unless otherwise noted.

### 2x4 feet



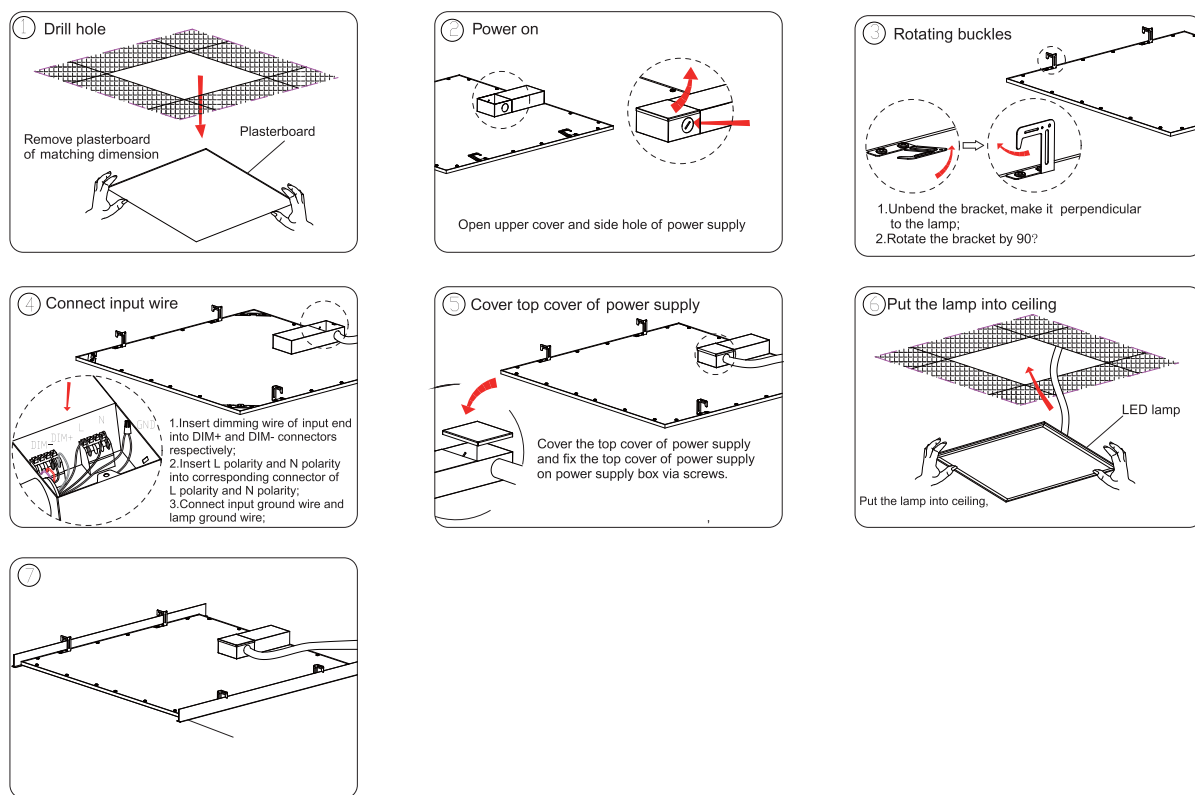
All dimension tolerance is  $\pm 0.5\text{mm}$  unless otherwise noted.

## Electrical Connection



## Installation Instructions

### Embedded Installation



### Product packaging information:

2*2	1*4	2*4
<ul style="list-style-type: none"> <li>● Net weight/PC: 3.0kg</li> <li>● gross weight/CTN: 15kg</li> <li>● Inner size: 649X647X108mm</li> <li>● Carton size: 670X675X240mm</li> <li>● 2pcs/inner box, 2 inner boxes/carton</li> </ul>	<ul style="list-style-type: none"> <li>● Net weight/PC: 3.0kg</li> <li>● gross weight/CTN: 17kg</li> <li>● Inner size: 1256X349X108mm</li> <li>● Carton size: 1280X240X375mm</li> <li>● 2pcs/inner box, 2 inner boxes/carton</li> </ul>	<ul style="list-style-type: none"> <li>● Net weight/PC: 6.0kg</li> <li>● gross weight/CTN: 28kg</li> <li>● Inner size: 1255X647X94mm</li> <li>● Carton size: 1290X680X220mm</li> <li>● 2pcs/inner box, 2 inner boxes/carton</li> </ul>

### Notice

1. Please read the specification first, to make sure the service environment matches the condition in the specification before using.
2. Please confirm the applicable power supply before using.
3. Make sure the switch of product is off before connect to the power supply to prevent electric shock.
4. Operation against rules may damage your property even harm to your personal safety.
5. Preliminarily estimate required quantity of LED panel lights, then according to the power rating of single panel light to figure out the total power and design power supply plan.
6. Dangerous high voltage, Non-professionals are not allowed to maintain the products.
7. If the exterior flexible cable or wire is damaged, it must exchange by the supplier, its agent or other similar qualified personnels to avoid dangers.