

Color tunable and dimmable LED Panel light —Bluetooth control version

PL-PSDAWRE6060-X40W

PL-PSDAWRE3012-X40W

PL-PSDAWRE6012-X50W



Specifications

Model	CCT	SIZE (feet)	Color	LED Type	Lumen(lm) (±10%)	CRI	Beam angle	Power(W) (±10%)	Voltage (V)	Dimmer	Current (A)	PF
PL-PSDAWRE6060-X40W	3000K	2*2	warm white	2835	4000 lm	>80	110°	40W	AC100-277V 50/60Hz	bluetooth	0.5	>0.95
	4000K		natural white		4140 lm	>80	110°					
	5000K		cool white		4120 lm	>80	110°					
PL-PSDAWRE3012-X40W	3000K	1*4	warm white	2835	4040 lm	>80	110°	40W	AC100-277V 50/60Hz	bluetooth	0.5	>0.95
	4000K		natural white		4120 lm	>80	110°					
	5000K		cool white		4140 lm	>80	110°					
PL-PSDAWRE6012-X50W	3000K	2*4	warm white	2835	5050 lm	>80	110°	50W	AC100-277V 50/60Hz	bluetooth	0.5	>0.95
	4000K		natural white		5150 lm	>80	110°					
	5000K		cool white		5200 lm	>80	110°					

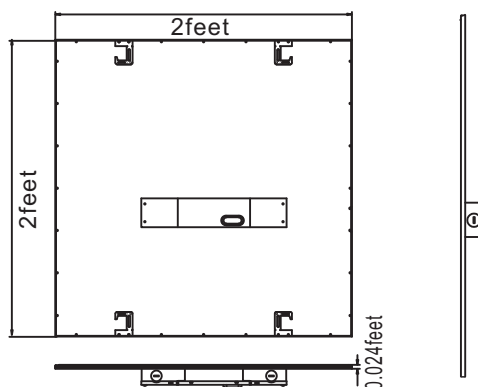
Applications

X Series Square Panel Light can be used in hotels, meeting rooms, factories, offices, commercial purposes, residential, institution buildings, schools, hospitals, places which needs energy saving and high color rendering index lighting.



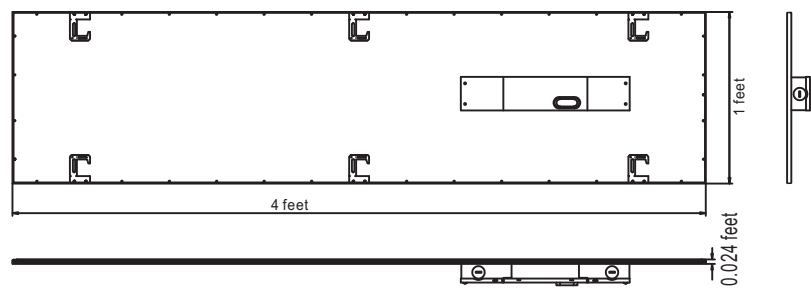
Dimensions (Unit: feet)

2x2 feet



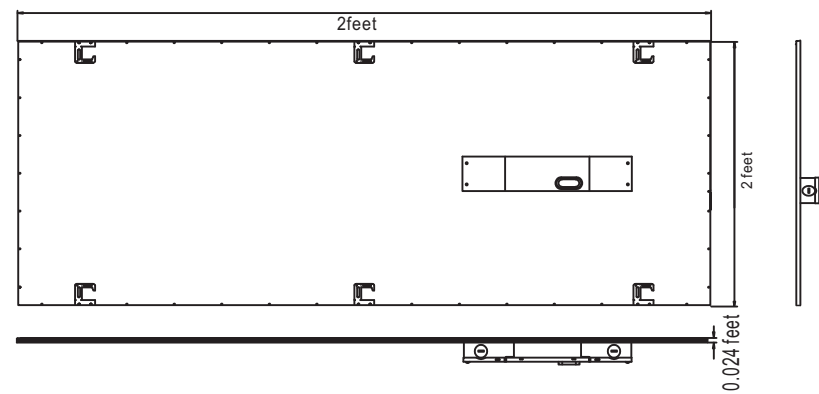
All dimension tolerance is $\pm 0.5\text{mm}$ unless otherwise noted.

1x4 feet



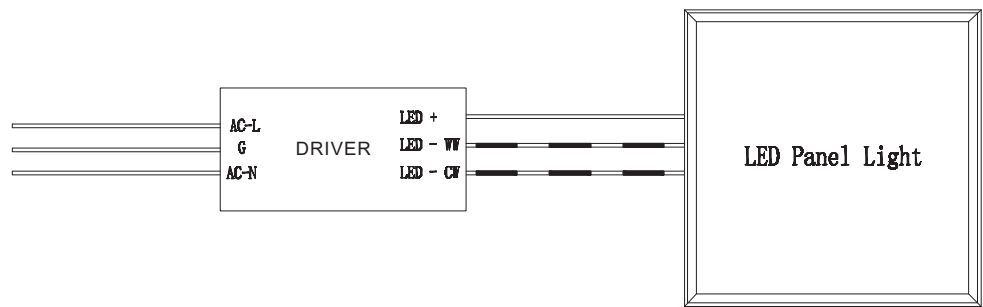
All dimension tolerance is $\pm 0.5\text{mm}$ unless otherwise noted.

2x4 feet



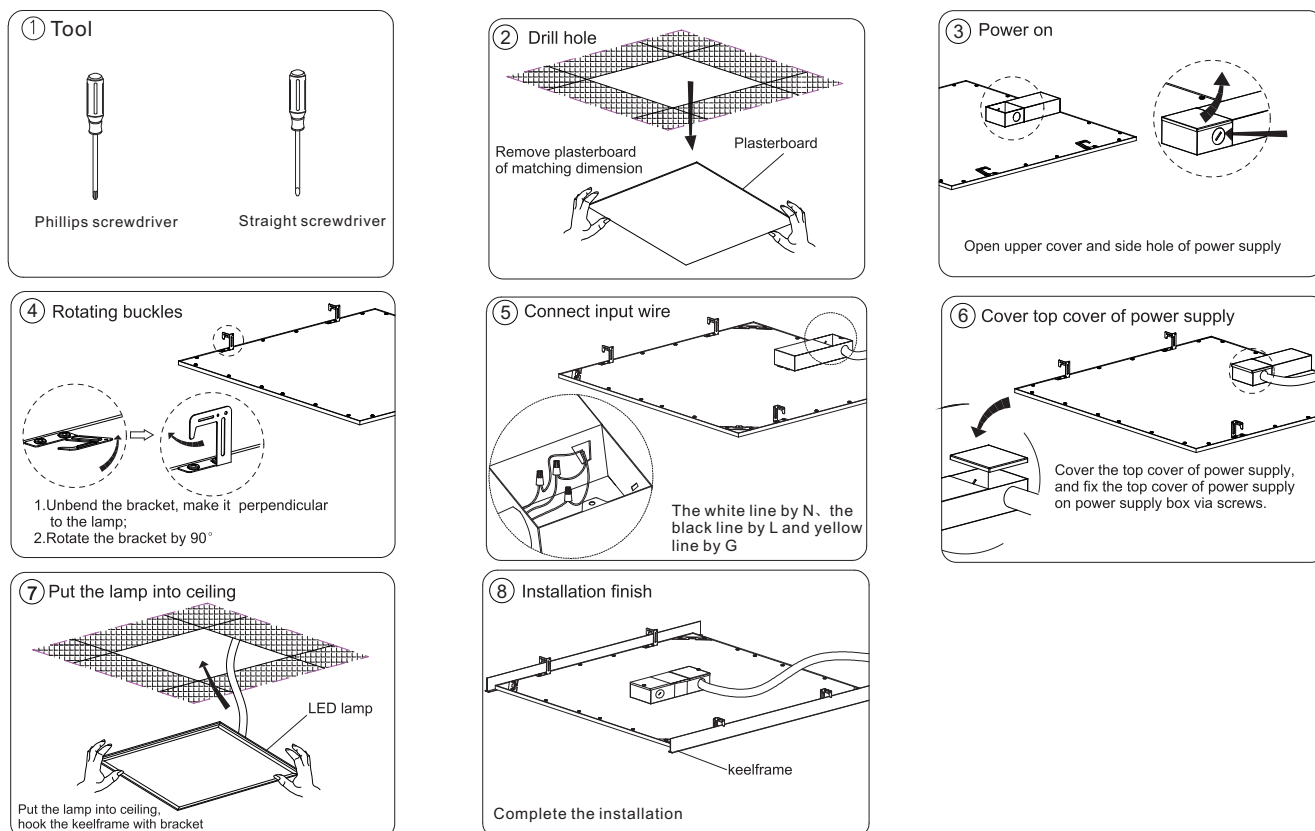
All dimension tolerance is $\pm 0.5\text{mm}$ unless otherwise noted.

Electrical Connection



Installation Instructions

Embedded Installation



How to control

1. Control the panel light by APP with your Phone and Ipad, See the spec for app.



2. By remote controller PL-RC01B-K9-HA (for option), see the spec for remote controller



3. By remote panel PL-RC02B-K5-PA (for option), see the spec for remote panel



Product packaging information:

2*2	1*4	2*4
<ul style="list-style-type: none"> Net weight/PC: 3.0kg gross weight/CTN: 15kg Inner size: 649X647X108mm Carton size: 670X675X240mm 2pcs/inner box, 2 inner boxes/carton 	<ul style="list-style-type: none"> Net weight/PC: 3.0kg gross weight/CTN: 17kg Inner size: 1256X349X108mm Carton size: 1280X240X375mm 2pcs/inner box, 2 inner boxes/carton 	<ul style="list-style-type: none"> Net weight/PC: 6.0kg gross weight/CTN: 28kg Inner size: 1255X647X94mm Carton size: 1290X680X220mm 2pcs/inner box, 2 inner boxes/carton

Notice

1. Please read the specification first, to make sure the service environment matches the condition in the specification before using.
2. Please confirm the applicable power supply before using.
3. Make sure the switch of product is off before connect to the power supply to prevent electric shock.
4. Operation against rules may damage your property even harm to your personal safety.
5. Preliminarily estimate required quantity of LED panel lights, then according to the power rating of single panel light to figure out the total power and design power supply plan.
6. Dangerous high voltage, Non-professionals are not allowed to maintain the products.
7. If the exterior flexible cable or wire is damaged, it must exchange by the supplier, its agent or other similar qualified personnels to avoid dangers.