



300W VSolution LED Highbay

Order Code: HB81256



Description

Venture Lighting's highbays are low profile, light weight, and designed for long life with low maintenance and great performance. These LED luminaires are designed to quickly and easily upgrade existing HID and fluorescent fixtures.

Construction

The high performance LED source is mounted to an aluminum heat sink which is designed to ensure proper thermal management of the system. This design allows for a cooler running LED chip which leads to longer lifetime, better efficacy, and color consistency. Fixtures are rated for an ambient operating temperature range -22°F to 104°F (-30°C to 40°C).

Optics

The units are equipped with a 90 degree beam spread for higher mounting heights and are also field adjustable with an accessory lens.

Electrical

The power supply has a range of 347-480V, 50/60 Hz. 0-10V DC dimming capability is standard. Fixtures are IP65 rated, suitable for wet locations.

NOTE:

*Lumen maintenance data is based on LED testing per IESNA LM-80-08 and projected per IESNA TM-21-11



IP65



VENTURE
LIGHTING

Model# HB1-300WC26B3BUP

Product Performance

Wattage	300W
Lumen Output	42460
Correlated Color Temperature (CCT)	5000K
Color Rendering Index (CRI)	80
Lumen Maintenance @50,000 hours*	89%
Calculated L70 @ 25°C Ambient in Hours*	155,000
Replaces HID Wattage	1000W
Beam Angle (°)	90°
Operating Temperature Range	-22°F to 104°F (-30°C to 40°C)

Physical Characteristics

Diameter	12.6"
Input Cable Length	5ft.
Safety Cable Length	4ft.
Fixture Color	Black
Weight	13.6 lbs
Height	8.13"

Electrical Characteristics

Amperage Draw (Input Volts/Amps)	347/0.91 480/0.66
----------------------------------	-------------------

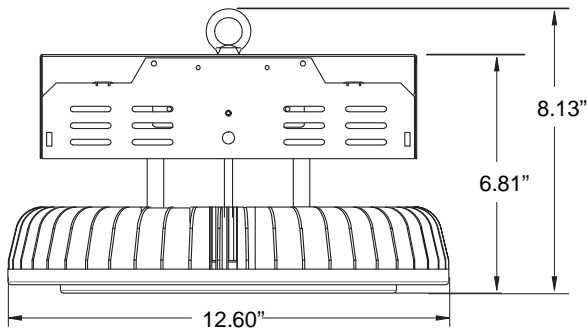
Regulatory Qualifications

cULus Listed
HB1-300WC26B3BUP

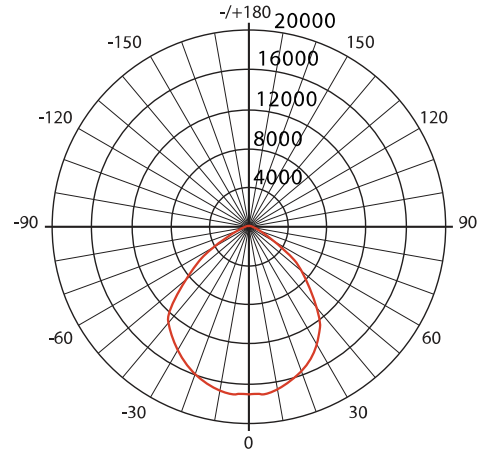
Accessories

AC62148 – Pendant Mount Kit
LN15997 - 120° Clear Tempered Glass Lens for 300W VSolutions HB
LN10210 - 120° Frosted Tempered Glass Lens for 300W VSolutions HB
LN13413 - 120° Clear Polycarbonate Lens for 300W VSolutions HB
LN10374 - 60° Polycarbonate Lens for 300W VSolutions HB
RF55800 - 16" Dia. Polycarbonate Reflector for 150W and 300W VSolutions HB
RF50402 - 16" Dia. Aluminum Reflector (90°) for 150W and 300W VSolutions HB
For factory installed plug options see next page
RF19927 - 16" Clear Acrylic Reflector for 150W and 300W VSolutions HB
RF19935 - 16" Diffuse Acrylic Reflector for 150W and 300W VSolutions HB
LN28315 - 16" Clear Acrylic Drop Lens for 150W and 300W VSolutions HB
LN28325 - 16" Diffuse Acrylic Drop Lens for 150W and 300W VSolutions HB
RF63661 - 16" Diameter SS Lens Band

Venture 300W VSolution LED Highbay



Luminous Intensity Distribution Diagram



LN13413
120° Clear Polycarbonate Lens



LN10374
60° Polycarbonate Lens



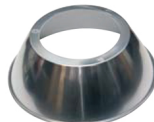
LN10210
120° Frosted Tempered Glass Lens



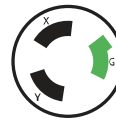
LN15997
120° Clear Tempered Glass Lens



RF55800



RF50402



NEMA L8-20P

Plug Options*

Molded Plug Options with 11ft Cable*

"-P4" - NEMA P8-20P for 480V

"-P3-C" - NEMA P8-20P for 480V w/ cable

NOTE: * Add Suffix to Part# for Factory Installed option

Factory installed plug options

(800) 451-2606
Fax: (800) 451-2605
2451 Enterprise Parkway East
Twinsburg, Ohio 44087 USA
E-mail: venture@adlt.com
VentureLighting.com

