

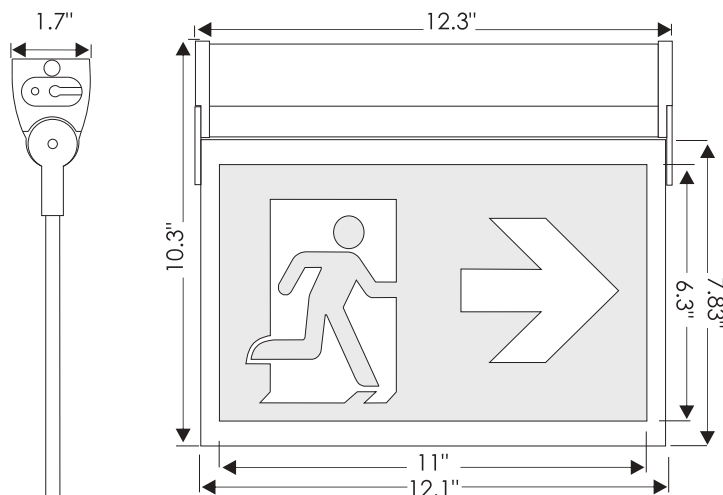
### Description

This edge-lit running man is developed with modern design, constructed of aluminum and PC panel, ease of installation. High quality Led light source is distributed evenly on pictogram sign. 180-degree rotation trims with standard universal surface mount. Standard sandblast finishes with optional brush finish and white powder coat finish. Universal canopy included for standard surface mount.

### Circuitry

Models Input voltage	CM-115RM-SP	Circuitry-SP
AC120V 50/60Hz	Input Wattage: 3W	<ul style="list-style-type: none"><li>● Emergency duration: <math>\geq 2</math> Hours</li><li>● Recharge time: 20 Hours</li><li>● Output Wattage: 1W</li><li>● Light Source: Ultra bright LED</li><li>● Color temperature: 6500K-7500K</li><li>● Ni-cad Battery: 3.6V 1000mAh jj</li><li>● Product Size<ul style="list-style-type: none"><li>1、113: 314*247*43.5/mm</li><li>2、115: 314*262*43.5/mm</li></ul></li></ul>
	Input Current: 0.24A	
	Efficiency: 0.98P	
AC277V 50/60Hz	Input Wattage: 3.5W	
	Input Current: 0.014A	
	Efficiency: 0.93P	
AC347V 50/60Hz	Input Wattage: 4W	
	Input Current: 0.017A	
	Efficiency: 0.92P	
PS: Battery voltage is negatively relative to input wattage		
Emergency UDC Wattages as Follows: 6V-24V:1.2W		
AC and UDC cannot be imported simultaneously		

### Product Size



### Attention

- 4.1: IMPORTANT SAFETY GUARDS When using electrical equipment, basic safety precautions should always be followed, including the following:
- 4.1.1. Read and follow all safety instructions.
  - 4.1.2. Disconnect power before performing work on electrical equipment.
  - 4.1.3. Do not use outdoors
  - 4.1.4. Do not let power cords touch hot surfaces.
  - 4.1.5. Do not install near gas or electric heaters.
  - 4.1.6. The use of accessory equipment not recommended by manufacturer, may cause ☐ and will void the unit's warranty.
  - 4.1.7. Do not use this equipment for other than its intended purpose.
  - 4.1.8. Servicing of this equipment should be performed by qualified service personnel.
  - 4.1.9. Equipment should be mounted in locations and at heights where it will not readily be subjected to tampering by unauthorized personnel.

### Installation Instructions

**Ceiling Mount (see Fig.1)**

**Surface Wall Mount (see Fig.2)**

- 5.1. Attach spider plate/crossbar to junction box, use screws if needed
- 5.2. Feed AC supply wires through canopy center hole
- 5.3. Assemble canopy onto aluminum housing with screws (supplied) and make proper wire connections
  - 5.3.1. Black Wire (L); White Wire (N); Green Wire (G/E)
  - 5.3.2. Yellow wire: 6V to 24V/DC positive(+); Purple wire: Negative(-).
- 5.4. Use screws (supplied) to tighten canopy to mounting plate (spider plate/cross bar)
- 5.5. The unit can be installed on any surface, you may rotate the Acrylic panel in any angle from 0 degree to 180 degree.

#### Side Mount (See Fig.3)

- 5.6. Attach spider plate/crossbar to junction box, using screws if needed
- 5.7. Remove the opposite mounting end cap and knock out the holes on the cap for pulling through wires and assembly screws.
- 5.8. Pull out all AC supply wires and feed wires through the holes of end cap (first) and then canopy.
- 5.9. Assemble canopy and end cap to metal bracket with screws (supplied) and make proper wire connections.
- 5.10. Using screws (supplied) tighten canopy to spider plate (crossbar).
- 5.11. The unit can be installed on any surface, you may rotate the Acrylic panel in any angle from 0 degree to 180 degree.

#### Recessed Mount (See Fig.4)

- 5.12. Refer to assembly drawing before you start installation
- 5.13. Position metal housing and bar hangers between joists. Make sure bar hangers are oriented in the correct position.
- 5.14. Adjust height of metal housing vertically using adjusting slots and tightening all screws on adjusting slots and bar hanger bracket to secure adjusting bracket and bar hanger.
- 5.15. Make proper electrical connections at junction box in the ceiling.
- 5.16. Secure trim plate by using provided screws.

#### Change Running Man Pictogram (see Fig.5)

#### CM-115

- 5.23. Unbolt the faceplate from the trim assembly
- 5.24. Slide faceplate assembly out of the trim assembly: pictogram, styrene, Acrylic with dots on both sides
- 5.25. Exchange pictogram

#### Wiring Diagram

##### AC Wiring

Working voltage: AC 120V-347V 50Hz/60Hz

Black Wire (L)  
White Wire (N)  
Green Wire (E)

##### UDC Wiring

Yellow wire: 6V to 24V/DC positive(+)  
Purple wire: Negative(-).

AC and UDC cannot be imported simultaneously

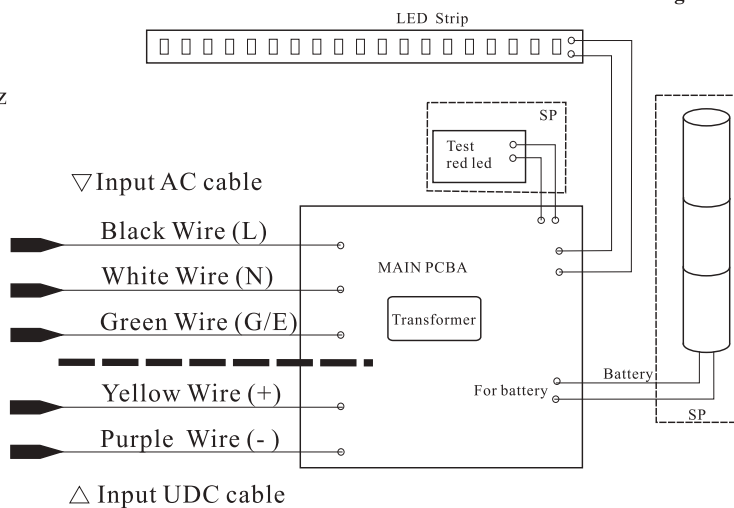


Fig.2.1

## Wiring Diagram

### AC Wiring

Working voltage: AC120V-347V 50Hz/60Hz

Black Wire (L)

White Wire (N)

Green Wire (E)

### UDC Wiring

Yellow wire: 6V to 24V/DC positive(+)

Purple wire: Negative(-).

AC and UDC cannot be imported simultaneously

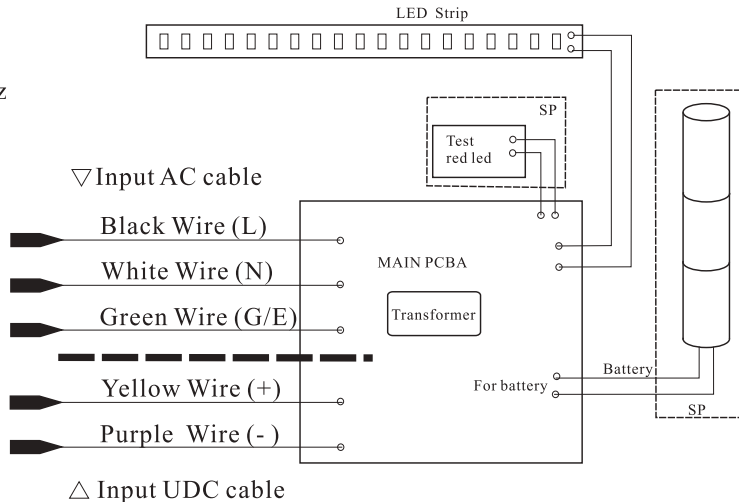


Fig.2.2

## AC/SP Wiring

Black Wire (L)  
AC120V-347V

White Wire (N)

Green Wire (E)

## AC/SP Wiring

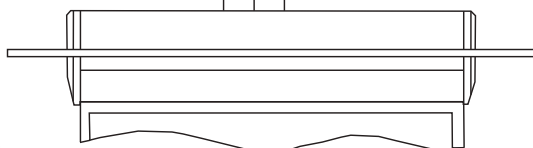


Fig.2.3

## UDC Wiring Diagram

Black Wire (L)  
AC120V-347V

White Wire (N)

Green Wire (E)

Yellow wire: 6V to 24V/DC(+)

Purple wire: Negative(-).

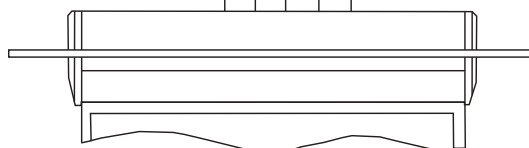
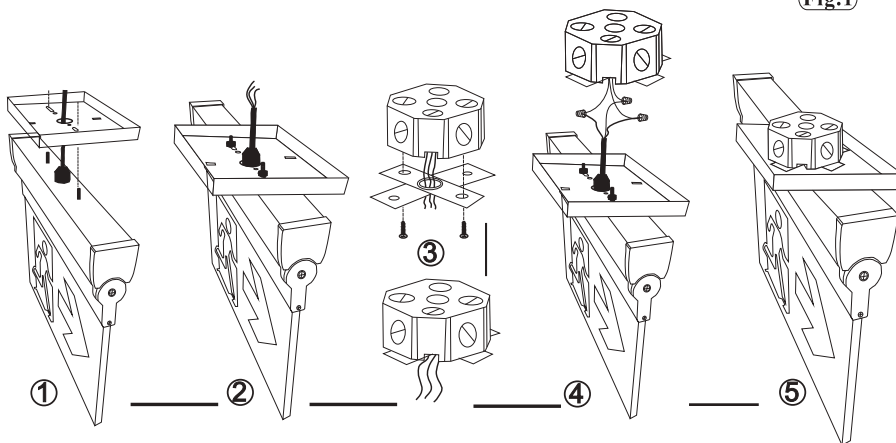
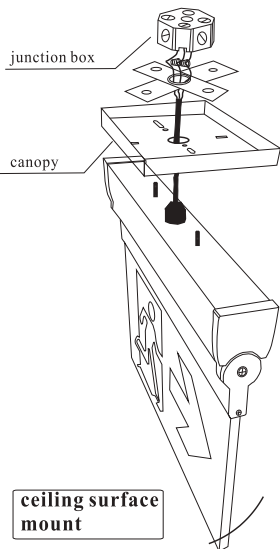
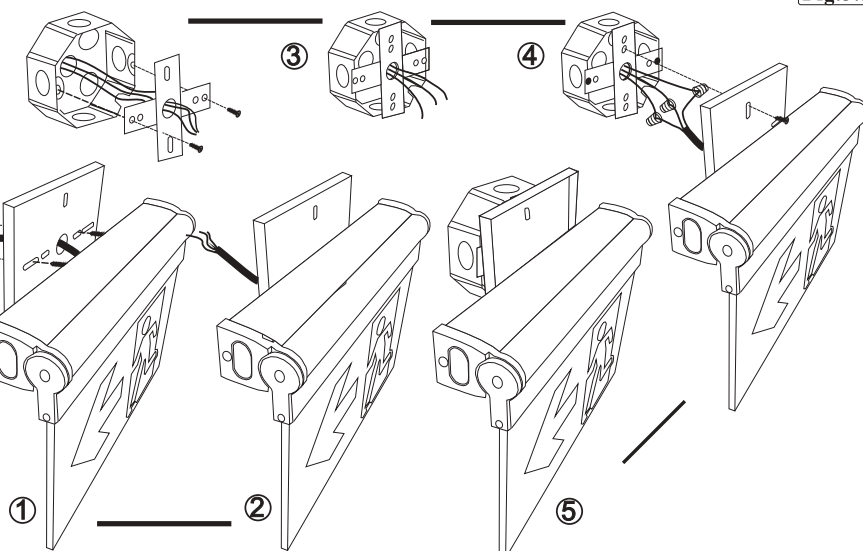
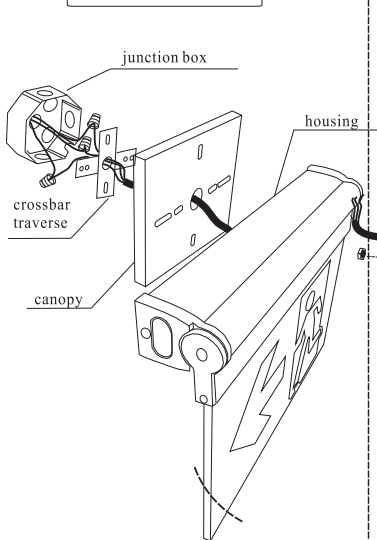


Fig.1



## wall surface mount

Fig.3.1



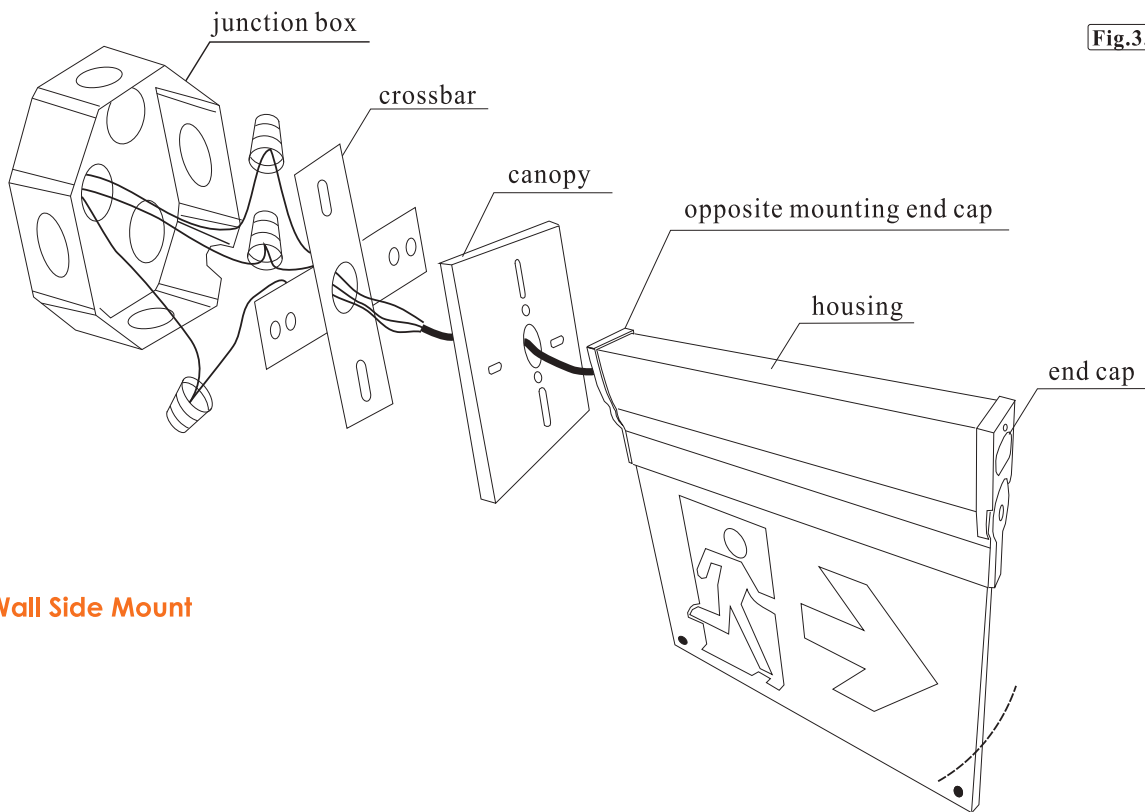


Fig.3.2

## Wall Side Mount

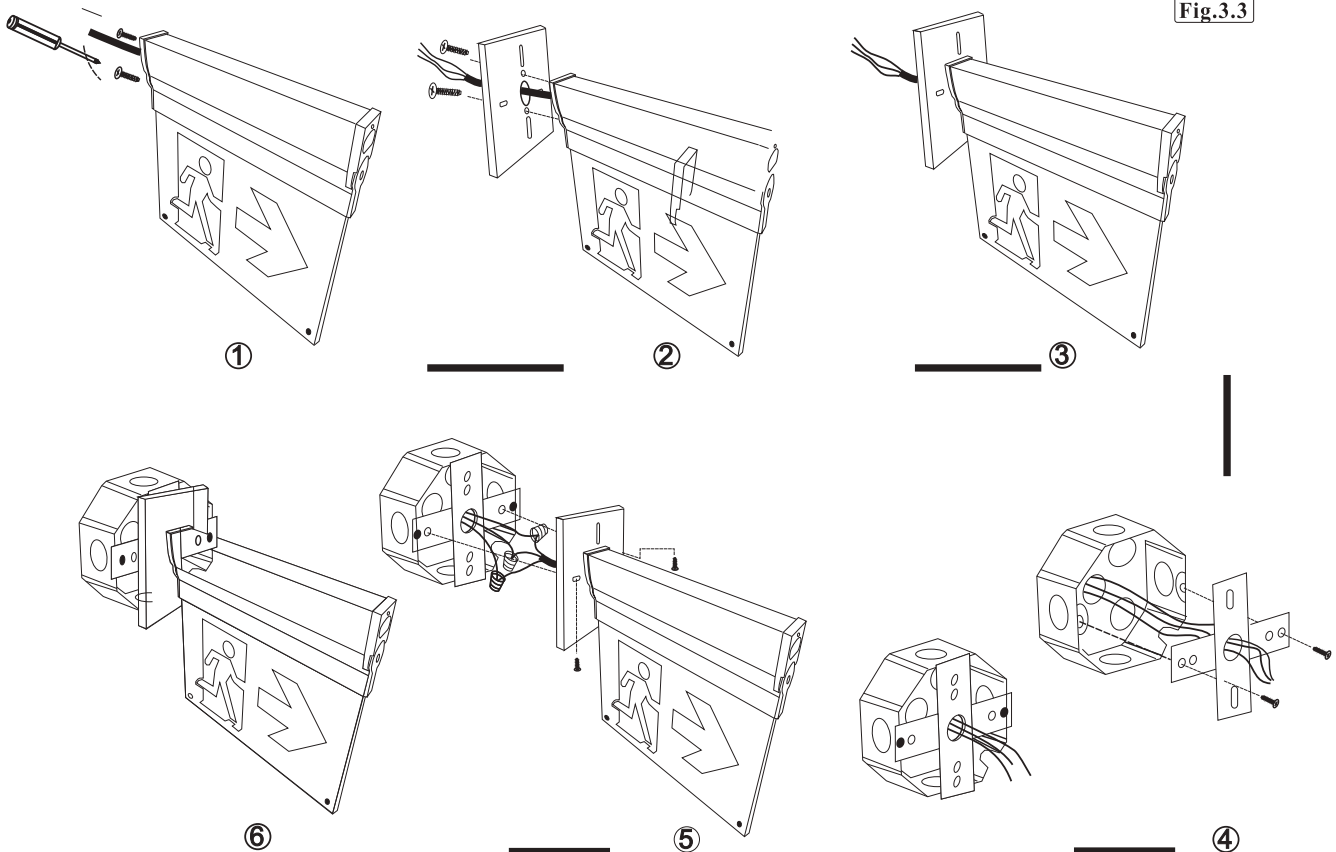


Fig.3.3